



SafeSign Identity Client Minidriver for Windows

Installation Guide



Table of Contents

1	Installation	1
1.1	Prerequisites.....	1
1.1.1	Previous version	1
1.1.2	Silent installation.....	1
1.1.3	Administrator rights	1
1.1.4	Operating System.....	1
1.2	Installation Procedure.....	2
1.2.1	Custom Setup	7
2	Install SafeSign in Firefox.....	8
2.1	Firefox Installer	8
2.2	Manual installation	10
3	Maintenance	12
3.1	Modify	12
3.2	Repair	15
3.3	Remove.....	17
4	Uninstallation	18
4.1	Uninstall Card Minidriver	18
4.2	Uninstall SafeSign.....	19



Table of Figures

Figure 1: InstallShield Wizard: Welcome to the InstallShield Wizard for SafeSign IC Minidriver.....	2
Figure 2: InstallShield Wizard: Are you sure you want to cancel SafeSign IC Minidriver installation?	3
Figure 3 : InstallShield Wizard: InstallShield Wizard Completed (interrupted).....	3
Figure 4: InstallShield Wizard: License Agreement.....	4
Figure 5: InstallShield Wizard: I accept the terms in the license agreement	4
Figure 6: InstallShield Wizard: Custom Setup	5
Figure 7: InstallShield Wizard: Ready to Install the Program	5
Figure 8: InstallShield Wizard: Installing SafeSign IC Minidriver	6
Figure 9: Windows Security: Would you like to install this device software?.....	6
Figure 10: InstallShield Wizard: InstallShield Wizard Completed	7
Figure 11: SafeSign IC for Firefox Installer: Install SafeSign in Firefox.....	8
Figure 12: Install SafeSign in Firefox: SafeSign has been successfully installed in Firefox.....	8
Figure 13: SafeSign IC for Firefox Installer: Install SafeSign in Firefox.....	9
Figure 14: Token Administration Utility: Install SafeSign in Firefox.....	9
Figure 15: Firefox Device Manager	10
Figure 16: Firefox Device Manager: Load PKCS#11 Device Driver	10
Figure 17: Firefox Device Manager: SafeSign PKCS#11 Module	11
Figure 18: InstallShield Wizard: Welcome to the InstallShield Wizard for SafeSign IC Minidriver.....	12
Figure 19: InstallShield Wizard: Program Maintenance - Modify	13
Figure 20: InstallShield Wizard: Custom Setup - User Interface	13
Figure 21: InstallShield Wizard: Ready to Modify the Program	14
Figure 22: InstallShield Wizard Completed	14
Figure 23: InstallShield Wizard: Welcome to the InstallShield Wizard for SafeSign IC Minidriver.....	15
Figure 24: InstallShield Wizard: Program Maintenance - Repair	15
Figure 25: InstallShield Wizard: Ready to Repair the Program	16
Figure 26: InstallShield Wizard: InstallShield Wizard Completed	16



Warning Notice

All information herein is either public information or is the property of and owned solely by A.E.T. Europe B.V. who shall have and keep the sole right to file patent applications or any other kind of intellectual property protection in connection with such information.

This information is subject to change as A.E.T. Europe B.V. reserves the right, without notice, to make changes to its products, as progress in engineering or manufacturing methods or circumstances warrant.

Installation and use of A.E.T. Europe B.V. products are subject to your acceptance of the terms and conditions set out in the license Agreement that accompanies each product. Nothing herein shall be construed as implying or granting to you any rights, by license, grant or otherwise, under any intellectual and/ or industrial property rights of or concerning any of A.E.T. Europe B.V. information.

Cryptographic products are subject to export and import restrictions. You are required to obtain the appropriate government licenses prior to shipping this Product.

The information contained in this document is provided "AS IS" without any warranty of any kind. Unless otherwise expressly agreed in writing, A.E.T. Europe B.V. makes no warranty as to the value or accuracy of information contained herein. The document could include technical inaccuracies or typographical errors. Changes are periodically added to the information herein. Furthermore, A.E.T. Europe B.V. reserves the right to make any change or improvement in the specifications data, information, and the like described herein, at any time.

A.E.T. EUROPE B.V. HEREBY DISCLAIMS ALL WARRANTIES AND CONDITIONS WITH REGARD TO THE INFORMATION CONTAINED HEREIN, INCLUDING ALL IMPLIED WARRANTIES OF MERCHANTABILITY, FITNESS FOR A PARTICULAR PURPOSE, TITLE AND NON-INFRINGEMENT. IN NO EVENT SHALL A.E.T. EUROPE B.V. BE LIABLE, WHETHER IN CONTRACT, TORT OR OTHERWISE, FOR ANY INDIRECT, SPECIAL OR CONSEQUENTIAL DAMAGES OR ANY DAMAGES WHATSOEVER INCLUDING BUT NOT LIMITED TO DAMAGES RESULTING FROM LOSS OF USE, DATA, PROFITS, REVENUES, OR CUSTOMERS, ARISING OUT OF OR IN CONNECTION WITH THE USE OR PERFORMANCE OF INFORMATION CONTAINED IN THIS DOCUMENT.

© Copyright A.E.T. Europe B.V., 2000-2020. All rights reserved.

SafeSign Identity Client (IC) is a trademark of A.E.T. Europe B.V. All A.E.T. Europe B.V. product names are trademarks of A.E.T. Europe B.V. All other product and company names are trademarks or registered trademarks of their respective owners.

Credit Information:

"This product includes cryptographic software written by Eric A. Young (eay@cryptsoft.com)."

"This product includes software written by Tim J. Hudson (tjh@cryptsoft.com)."



Document Information

Document ID: SafeSign Identity Client Minidriver for Windows Installation Guide

Project Information: SafeSign IC Release Documentation

Document revision history:

Version	Date	Author	Changes
1.0	02 October 2020	Drs C.M. van Houten	First edition for SafeSign IC Minidriver Version 3.6, release 3.6.0.0-AET.000

Document Approval

Version	Date	Name	Function
1.0	06 October 2020	B. Smid MBT	Chief Development Officer

WE RESERVE THE RIGHT TO CHANGE SPECIFICATIONS WITHOUT NOTICE



About the Product

This competent all-rounder in terms of strong authentication, integration and compatibility gives you complete freedom and flexibility. Once rolled out, SafeSign Identity Client (IC) serves as the perfect guard for IT security and enables unlimited possibilities for securing your IT infrastructure.

SafeSign IC offers the most comprehensive support available on the market for (card) operating systems, smart cards, USB tokens, languages and functions. This means you have sustainable and permanent freedom of choice when it comes to manufacturer independence.

SafeSign IC enforces two- or multi factor authentication/logon to the network, client PC or application, requiring the end user to have both the USB token or smart card (something you have) and a Personal Identity Number (something you know). USB tokens and smart cards are physically and logically tamper-resistant, ensuring that the end user's digital credentials cannot be copied, modified or shared. Authentication based on smart cards or USB tokens provides the highest degree of security.

SafeSign IC is available for both fixed and mobile devices like desktops, servers, laptops, tablets and smart phones. SafeSign IC is also found in Thin Clients, printers or any other devices requiring authentication.



About the Manual

The aim of this document is to describe how to install the SafeSign Identity Client Minidriver (henceforth referred to a SafeSign IC Minidriver) software for Windows on your computer, i.e. the different steps needed by the setup program to install SafeSign IC Minidriver.

In order to install SafeSign IC Minidriver, follow the instructions in the manual.

Every activity has a number of steps, indicated by a number: **1**

Each step will require you to take a certain action, indicated by an arrow: **➔**

Go through these steps and the actions you are required to take, in order to perform the desired activity.

While reading this document, take the notes into account.



1 Installation

This document describes the installation procedure of SafeSign IC Minidriver on Windows 64-bit Operating Systems.

1.1 Prerequisites

In order to install SafeSign IC Minidriver, consider the following prerequisites.

1.1.1 Previous version

It is possible to upgrade an existing installation of SafeSign IC Minidriver version 3.5 ($\geq 3.5.2.0$) to SafeSign IC Minidriver version 3.6.

The upgrade procedure is identical to the installation procedure described in section 1.2

1.1.2 Silent installation

It is possible to perform a silent (unattended) installation of SafeSign IC Minidriver.

Please refer to the SafeSign IC Silent Installation Guide, available on request.

1.1.3 Administrator rights

In order to install SafeSign IC Minidriver you will need to have local administrator rights on the (local) computer itself. This is because upon installing SafeSign IC Minidriver, access to the registry is required, which a user without local administrator rights is not granted access to. When SafeSign IC Minidriver is installed, any user can use it.

1.1.4 Operating System

SafeSign IC Minidriver works with a number of Windows Operating Systems, starting from Windows 8.1 and higher, as defined in the latest Release Document.



1.2 Installation Procedure

This section describes the installation procedure of SafeSign IC Minidriver.

SafeSign IC Minidriver installation is quick and straightforward. The installation program will lead you through all steps necessary to install SafeSign IC Minidriver.

Screenshots were taken from the installation of SafeSign IC Minidriver 64-bit version on a 64-bit Windows 10 2004 Enterprise Operating System.

It is strongly recommended that you exit all Windows programs before running the Setup program.

To install SafeSign IC Minidriver, locate the SafeSign IC Minidriver setup file (.msi) and double-click it to prepare and start the SafeSign IC Minidriver Windows 64-bits InstallShield Wizard.

- Note that the default language of the Installation program is English. In order to install the .msi in a particular language (other than English), you will need to install the .msi with specific parameters, to apply a transform. Refer to section 10.1 of the SafeSign IC Minidriver version 3.6 Release Document for Windows.

- 1 When the SafeSign IC InstallShield Wizard is started, the *Welcome to the InstallShield Wizard for SafeSign IC Minidriver Windows 64-bits* window is displayed, welcoming you to the InstallShield Wizard for SafeSign IC:

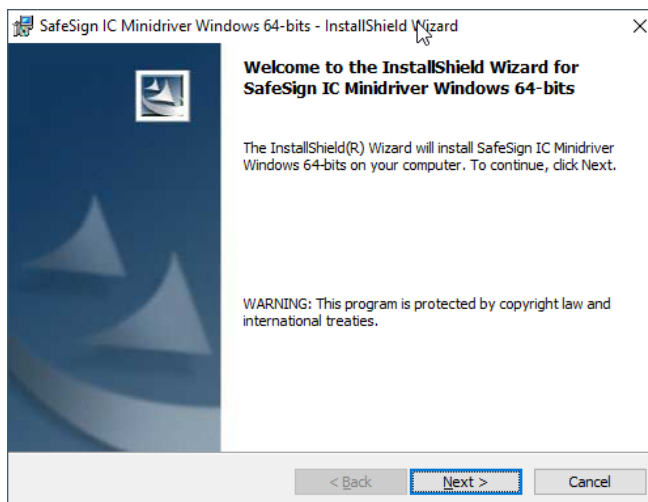


Figure 1: InstallShield Wizard: Welcome to the InstallShield Wizard for SafeSign IC Minidriver

- ➔ Click **Next** to continue



- Please note that at every stage of the installation process, you can halt / stop the installation. In order to do so, click **Cancel**. A dialog box will be displayed, asking confirmation to cancel the installation. This dialog box also enables you to resume Setup or to exit definitely:

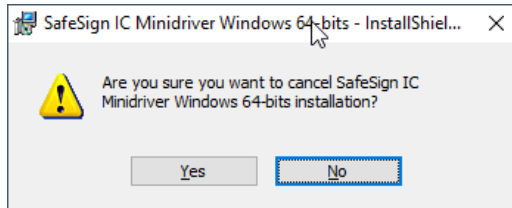


Figure 2: InstallShield Wizard: Are you sure you want to cancel SafeSign IC Minidriver installation?

- Click **Yes** to cancel the installation
- Click **No** to continue the installation

Upon clicking **Yes**, the InstallShield Wizard will finish, without installing SafeSign IC Minidriver and modifying your system:

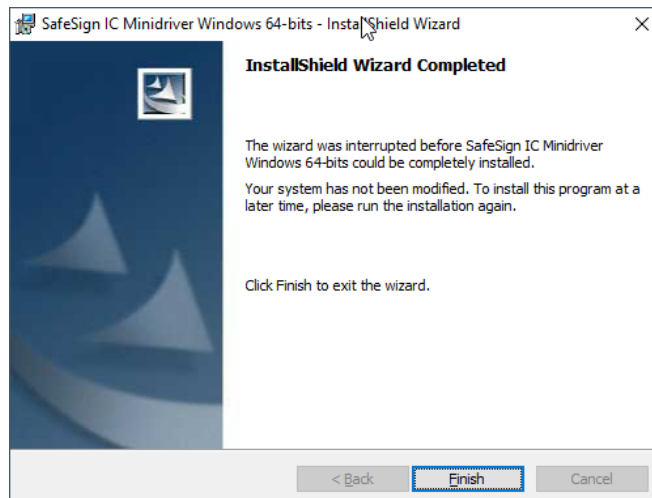


Figure 3 : InstallShield Wizard: InstallShield Wizard Completed (interrupted)



- 2 Upon clicking **Next** in the *Welcome to the InstallShield Wizard for SafeSign IC Minidriver Windows 64-bits* window (Figure 1), the *License Agreement* window is displayed, allowing you to read the SafeSign Identity Client License Terms and Conditions before accepting it:



Figure 4: *InstallShield Wizard: License Agreement*

Read the SafeSign Identity Client License Terms and Conditions carefully. Note that in order to install SafeSign IC Minidriver, you will need to accept the terms of this agreement.

Therefore, only upon selecting “I accept the terms in the license agreement”, the button **Next** will become available:



Figure 5: *InstallShield Wizard: I accept the terms in the license agreement*

- ➔ After accepting the terms of the License Agreement, click **Next** to continue Setup
- 🔗 You may return to the previous window by clicking **Back** at every step of the installation.

3

When you have accepted the SafeSign IC License Agreement and clicked **Next**, the *Custom Setup* window is displayed. This will enable you to select the features you wish to install:

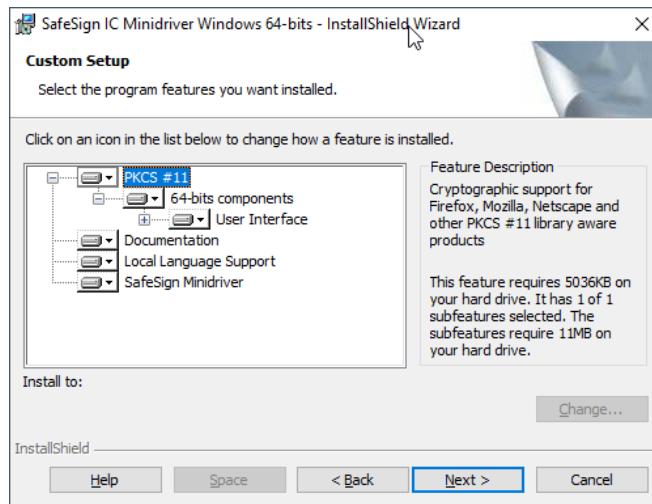


Figure 6: InstallShield Wizard: Custom Setup

➔ Click **Next** to install SafeSign IC Minidriver



For non-required features, you can select if and where they are installed. For example, you can choose not to install the feature “User Interface” by selecting the option “This feature will not be available”.

4

When you have selected the features you wish to install, the *Ready to Install the Program* window is displayed. The wizard is ready to begin installation:

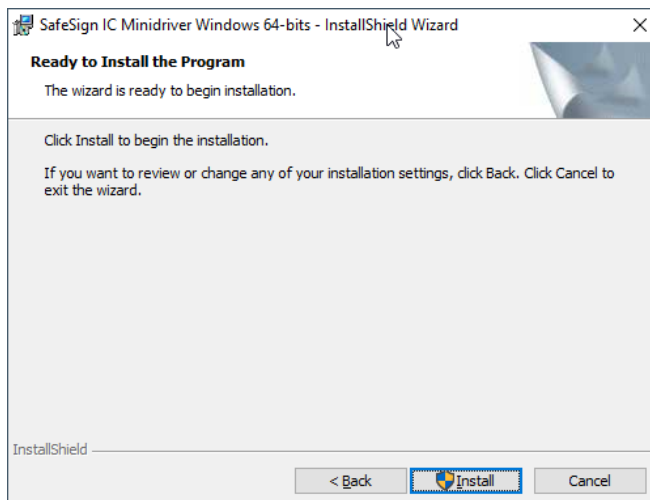


Figure 7: InstallShield Wizard: Ready to Install the Program

➔ Click **Install** to install SafeSign IC Minidriver

- 5 Upon clicking **Install** in the *Ready to Install the Program* window, the InstallShield Wizard installs SafeSign IC Minidriver, with the program features you selected:

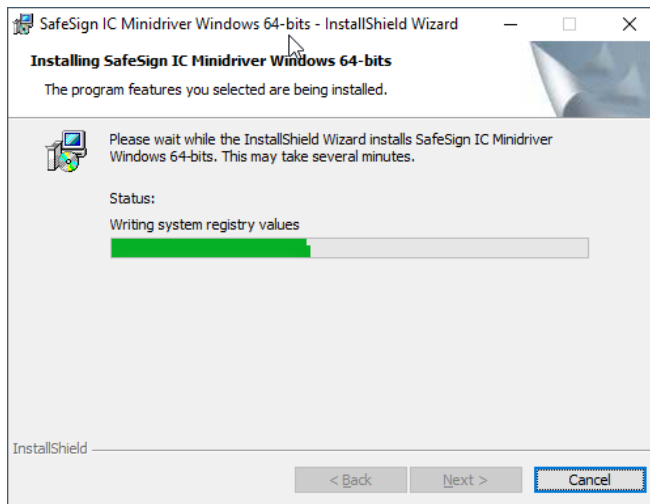


Figure 8: InstallShield Wizard: Installing SafeSign IC Minidriver

➔ Wait until the program is installed

- If you wish to cancel the installation at this stage, click **Cancel**. Please note that when interrupting or cancelling the installation at this point, SafeSign IC Minidriver will not be installed and your system will not be modified.

- 6 During the installation of SafeSign IC Minidriver, Windows Security will ask for permission to install the SafeSign Card Minidriver software:

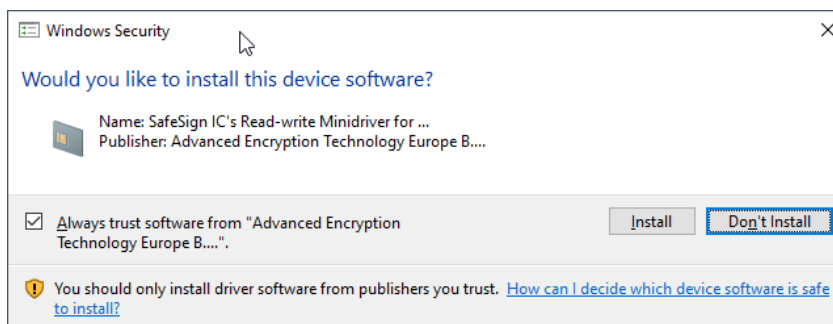


Figure 9: Windows Security: Would you like to install this device software?

In order to complete the installation of the SafeSign IC Minidriver, you need to click **Install**.

- Checking “Always trust software from “Advanced Encryption Technology Europe B...” (as in the dialog above), will import the certificate in the Trusted Publisher Store. Doing so will ensure that this security window will not appear (anymore) when installing a new version of the SafeSign Card Minidriver.

7 When SafeSign IC Minidriver is successfully installed, the *InstallShield Wizard Completed* window is displayed, informing you that SafeSign IC Minidriver was successfully installed:

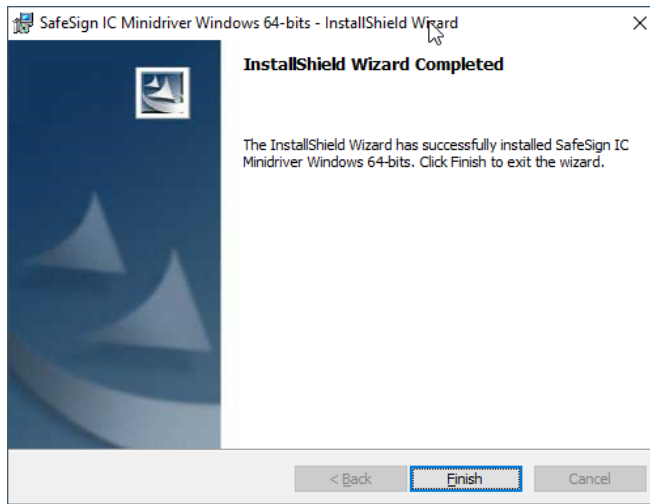


Figure 10: InstallShield Wizard: InstallShield Wizard Completed

➔ Click **Finish** to complete setup

🔗 Note that you will not be required to restart your computer, but it is recommended that you do so.

1.2.1 Custom Setup

In the *Custom Setup* window, the following components may be selected for installation of SafeSign IC Minidriver Windows 64-bits:

Component name	Description	
PKCS #11	<i>Cryptographic support for Firefox, Mozilla, Netscape and other PKCS #11 library aware products</i> Installs the SafeSign IC PKCS #11 Library	
	64-bits components	
	Install the 64-bit components of SafeSign	
	Installs the user interface and related components	
	User Interface	<i>Manages SafeSign cryptographic tokens and middleware</i> Installs the Token Administration Utility
Token Administration	<i>Manages SafeSign cryptographic tokens and middleware</i> Installs the Token Administration Utility	
	Install SafeSign in Firefox	<i>Installs the SafeSign PKCS #11 Library in the Firefox browser</i> Installs the SafeSign IC PKCS #11 Library as a security module in Firefox.
Task Manager	<i>Manage tasks that are performed upon token insertion or removal</i> Installs the ability (available from the Token Utility) to perform certain tasks when inserting or removing a token.	
Documentation	<i>This will install the SafeSign documentation</i> Installs the SafeSign IC License Agreement.	
Local Language Support	<i>Support user interface localization of the utility programs</i> Installs multi-language support for SafeSign IC utilities	
SafeSign Minidriver	<i>This will install the SafeSign Minidriver</i> Installs the SafeSign card Minidriver	

Table 1: Components for Custom installation



2 Install SafeSign in Firefox

When you have Mozilla Firefox installed on your computer and you selected the Token Administration in addition to “Install SafeSign in Firefox”, the SafeSign IC Minidriver InstallShield Wizard will allow you to install SafeSign IC in Firefox during the installation procedure.

Section 2.1 describes how to use the Firefox Installer to install (and uninstall) SafeSign IC in Firefox. Section 2.2 describes how to install SafeSign IC in Firefox manually.

2.1 Firefox Installer

- 1 If Firefox is installed on your computer, the SafeSign IC for Firefox Installer is loaded at a certain point during the setup of SafeSign IC (Figure 8):

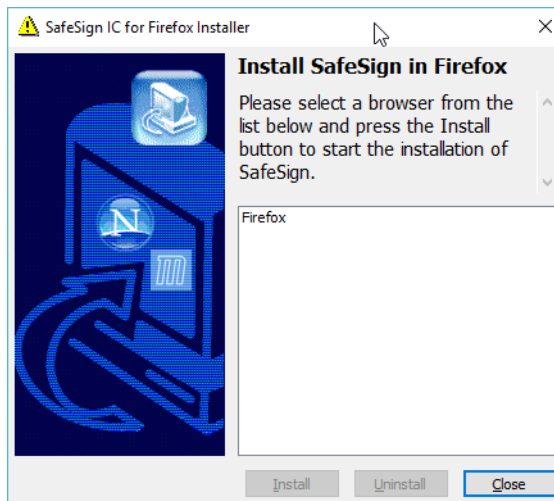


Figure 11: SafeSign IC for Firefox Installer: Install SafeSign in Firefox

It will display whether Firefox is present on your system and allows you to install SafeSign IC as a security module.

- ➔ Select Firefox and click **Install**

- 2 Upon selecting Firefox and clicking **Install**, the SafeSign IC PKCS #11 Library will be installed as a security module in Firefox:

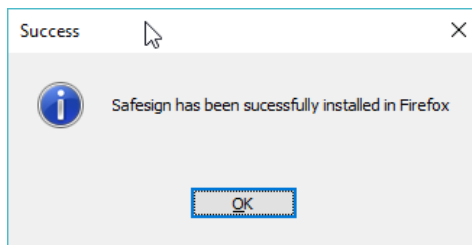


Figure 12: Install SafeSign in Firefox: SafeSign has been successfully installed in Firefox

- ➔ Click **OK**



- Note that the Firefox Installer also allows you to uninstall SafeSign IC from your Firefox browser. This can be done using the **Uninstall** button from the SafeSign IC for Firefox Installer:



Figure 13: SafeSign IC for Firefox Installer: Install SafeSign in Firefox

- Select Firefox and click **Uninstall**

- Note that the SafeSign IC for Firefox Installer will also be available from the Token Administration Utility (if you selected it in the *Custom Setup* window, see Figure 6), in case you want to install SafeSign IC in Firefox at a later time (for example, if you did not have Firefox installed on your computer when you installed SafeSign IC Minidriver):

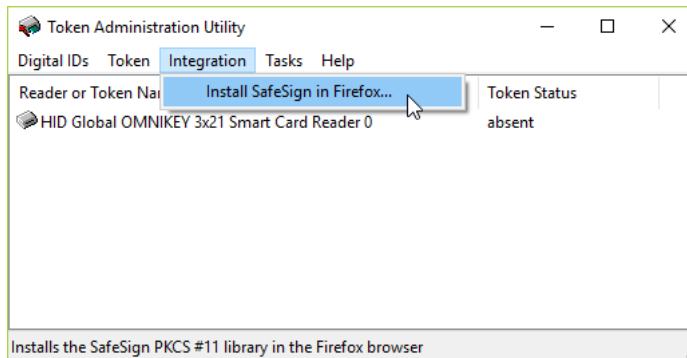


Figure 14: Token Administration Utility: Install SafeSign in Firefox



2.2 Manual installation

You can also manually install SafeSign IC in Firefox.

- 1 In Firefox, go to **Options > Privacy & Settings > Security Devices** to open the *Device Manager* window:

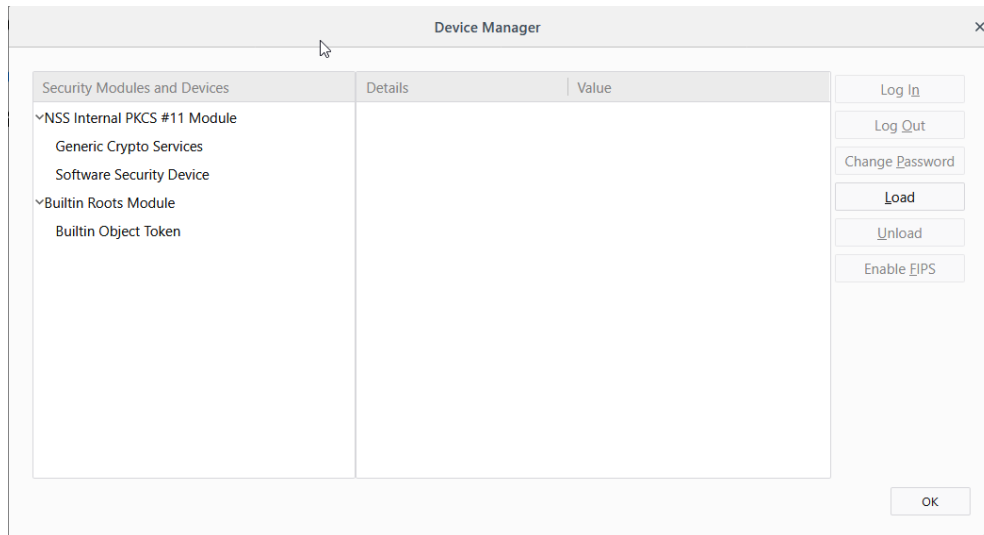


Figure 15: Firefox Device Manager

- 2 When the *Device Manager* window has opened, click on **Load** and fill in the required fields as follows:

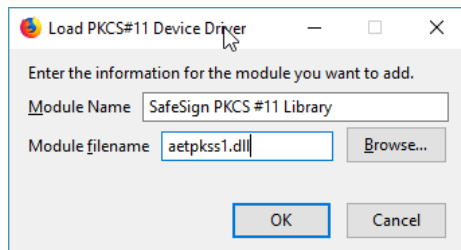



Figure 16: Firefox Device Manager: Load PKCS#11 Device Driver

You do not need to enter the full path to the location of the SafeSign IC PKCS #11 Library, as it is located by default in the Windows system directory.

-  Note that when you have a token inserted, you will be asked to enter the PIN for the token and log in.

-  Click **OK** and then **OK** again to confirm installation of the security module.



3

This will install the SafeSign IC PKCS#11 Library:

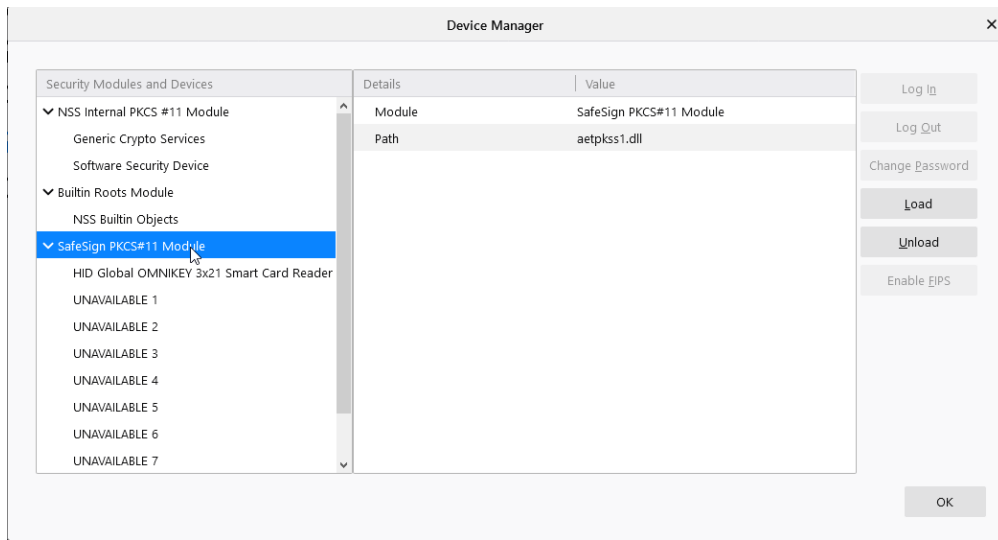


Figure 17: Firefox Device Manager: SafeSign PKCS#11 Module

➡ Close all open dialogs.



3 Maintenance

Using the SafeSign IC Minidriver installation file, you can modify, repair or remove an existing installation.

The following sections describe how to do so.

3.1 Modify

The example used in this section for modifying an existing installation is to deselect installation of the SafeSign IC Minidriver User Interface, the Token Administration Utility.

In order to modify an existing installation, locate the SafeSign IC Minidriver setup file (.msi) and double-click it to prepare and start the SafeSign IC Minidriver Windows 64-bits InstallShield Wizard.

- 1 When the SafeSign IC InstallShield Wizard is started, the *Welcome to the InstallShield Wizard for SafeSign IC Minidriver Windows 64-bits* window is displayed, welcoming you to the InstallShield Wizard for SafeSign IC:

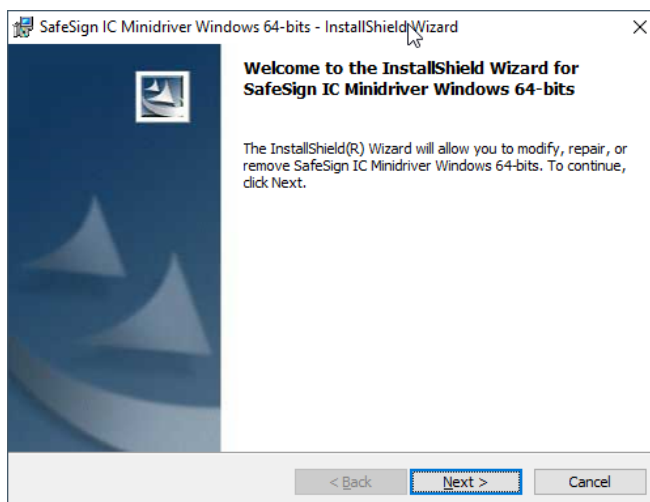


Figure 18: InstallShield Wizard: Welcome to the InstallShield Wizard for SafeSign IC Minidriver

- ➔ Click **Next** to continue

2

Upon clicking **Next**, the *Program Maintenance* window will appear, allowing you to modify, repair or remove the program:

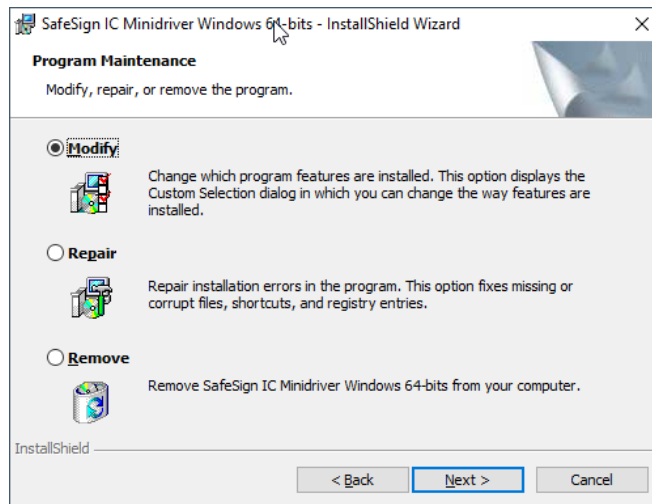


Figure 19: InstallShield Wizard: Program Maintenance - Modify

➔ Select Modify (as above) to change the program features installed and click **Next**

3

Upon clicking **Next**, the Custom Setup window will appear, in which you can change the (way) features are installed:

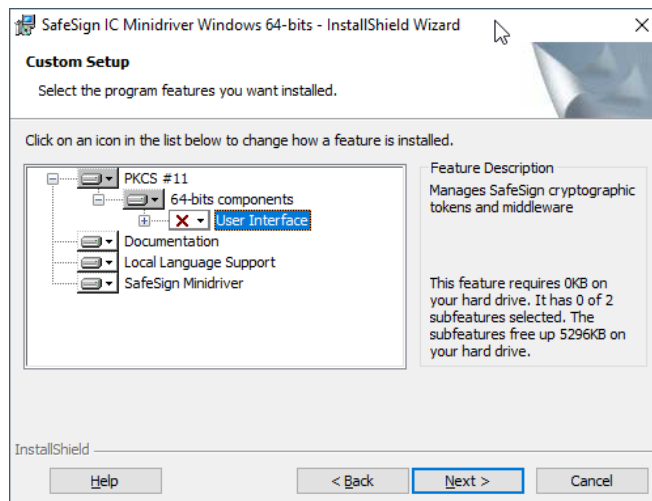


Figure 20: InstallShield Wizard: Custom Setup - User Interface

➔ Select “User Interface” for de-installation as done above and click **Next**

4

Upon clicking **Next**, the *Ready to Modify the Program* window is displayed, informing you that the InstallShield Wizard is ready to begin installation with the features you selected:

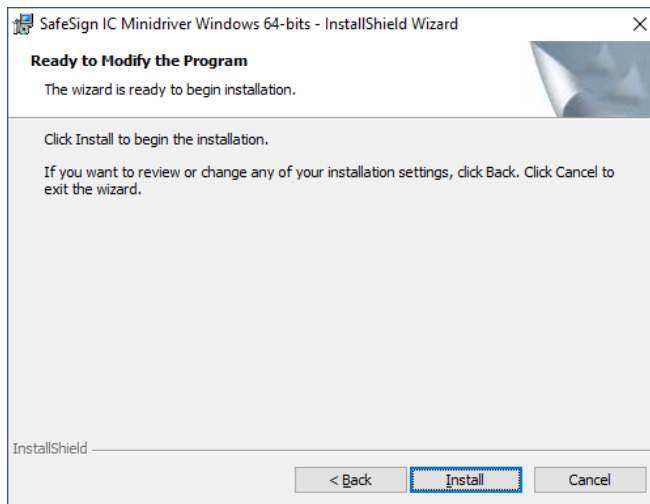


Figure 21: InstallShield Wizard: Ready to Modify the Program

➔ Click **Install** to install / uninstall the program features you (de)selected

5

When the InstallShield Wizard is ready modifying SafeSign IC Minidriver, you will be notified:

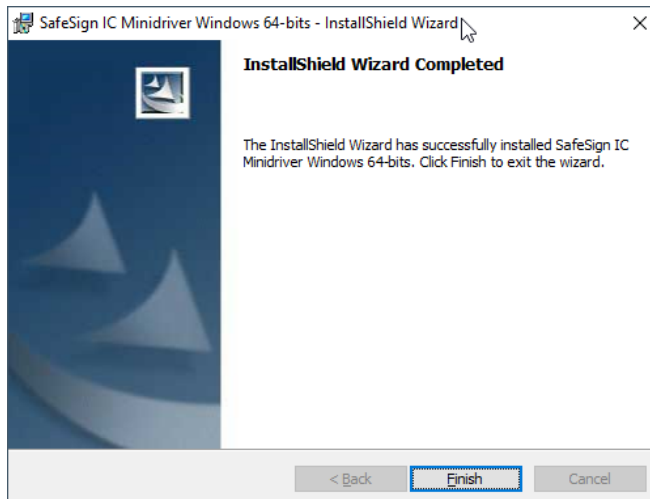


Figure 22: InstallShield Wizard Completed

➔ Click **Finish** to finish and exit the wizard

The user interface (i.e. the Token Administration Utility) will not be available anymore.

3.2 Repair

With the SafeSign IC Minidriver installation file it is possible to repair an existing installation. This option fixes missing or corrupt files, shortcuts and registry entries.

In order to repair an existing installation, locate the SafeSign IC Minidriver setup file (.msi) and double-click it to prepare and start the SafeSign IC Minidriver Windows 64-bits InstallShield Wizard.

- 1 When the SafeSign IC InstallShield Wizard is started, the *Welcome to the InstallShield Wizard for SafeSign IC Minidriver Windows 64-bits* window is displayed, welcoming you to the InstallShield Wizard for SafeSign IC:

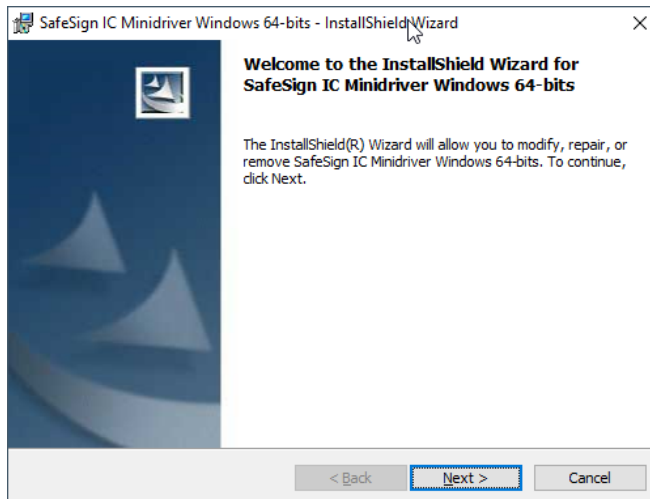


Figure 23: InstallShield Wizard: Welcome to the InstallShield Wizard for SafeSign IC Minidriver

- ➔ Click **Next** to continue

- 2 Upon clicking **Next**, the *Program Maintenance* window will appear, allowing you to modify, repair or remove the program:

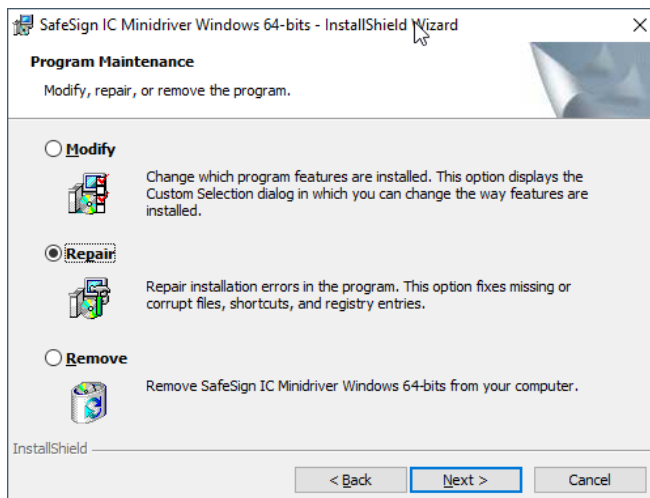


Figure 24: InstallShield Wizard: Program Maintenance - Repair

- ➔ Select **Repair** (as above) to repair errors in the program and click **Next**

3

Upon clicking **Next**, the *Ready to Repair the Program* window is displayed, informing you that the InstallShield Wizard is ready to begin installation:

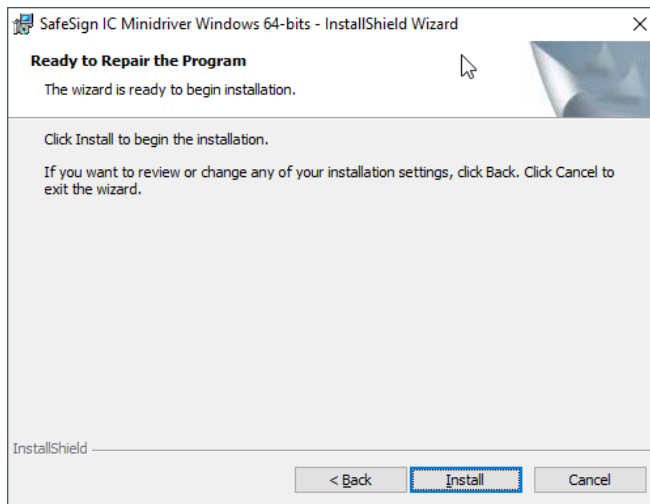


Figure 25: InstallShield Wizard: Ready to Repair the Program

➔ Click **Install** to repair SafeSign IC Minidriver

4

When the InstallShield Wizard is ready repairing / installing SafeSign IC Minidriver, you will be notified:

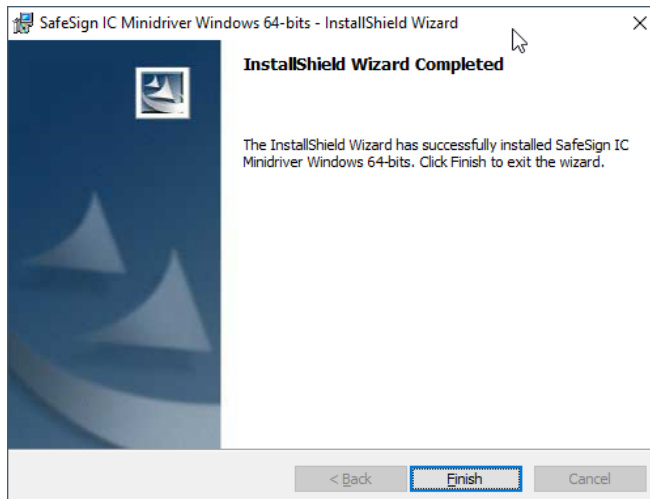


Figure 26: InstallShield Wizard: InstallShield Wizard Completed

➔ Click **Finish** to finish and exit the wizard



3.3 Remove

With the SafeSign IC Minidriver installation file it is possible to remove an existing installation.

However, this will only uninstall SafeSign IC Minidriver software (Token Utility, PKCS #11, etc.), not the SafeSign IC Card Minidriver (aetwcm1.dll / aetwcm1x.dll).

Therefore, the option to remove SafeSign IC Minidriver through the installer is not described here.


You should follow the procedure described in section 4 instead.



4 Uninstallation

De-installation of SafeSign IC Minidriver consists of two parts: uninstalling the SafeSign IC Card Minidriver (aetrwcm1.dll / aetrwcm1x.dll) and uninstalling SafeSign IC software (Token Utility, PKCS #11, etc.).

This section will describe how to remove both the SafeSign IC Card Minidriver and the SafeSign IC software.

 Note that you must reboot the computer after uninstalling.

4.1 Uninstall Card Minidriver

1 Go to Control Panel > Programs and Features > Uninstall or change a program and locate the SafeSign IC Card Minidriver:

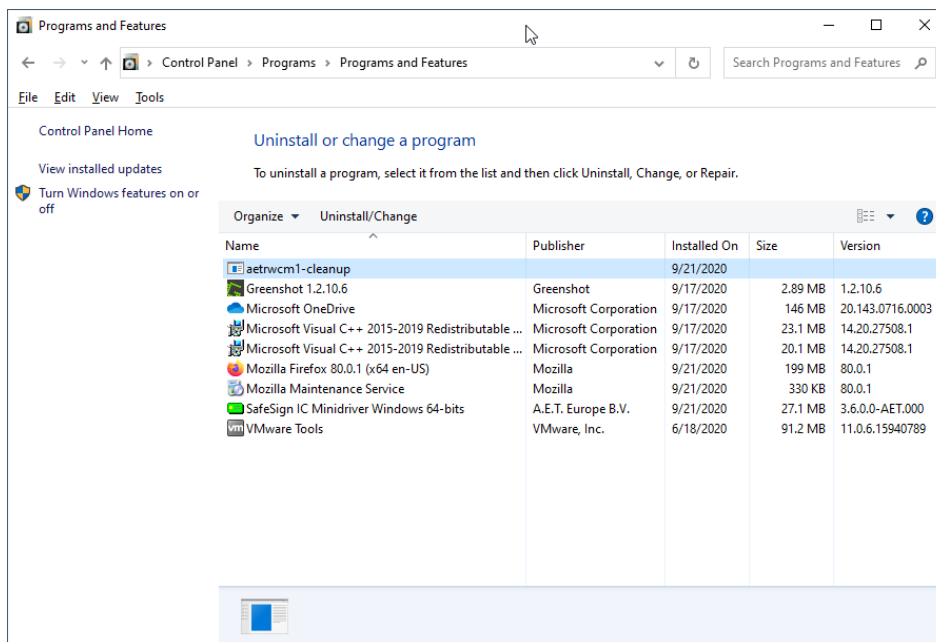



Figure 33: Programs and Features: Uninstall or change a program

 Select 'aetrwcm1-cleanup' (as above) and click **Uninstall/Change**



2

You will be asked to restart your computer:

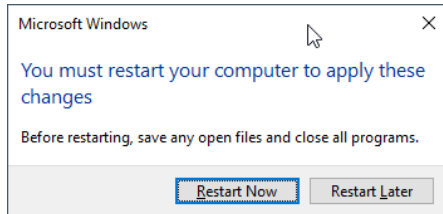


Figure 34: Microsoft Windows: Restart your computer

- ➔ Click **Restart Now** if you want to restart before removing SafeSign IC Card Minidriver
- Click **Restart Later** if you want to uninstall SafeSign IC Minidriver software first.

Note that in this document, we will continue uninstalling SafeSign IC before restarting. If you choose to restart first, continue with step 3 below after the restart.

4.2 Uninstall SafeSign

3

Now locate SafeSign IC Minidriver software in Control Panel > Programs and Features > Uninstall or change a program:

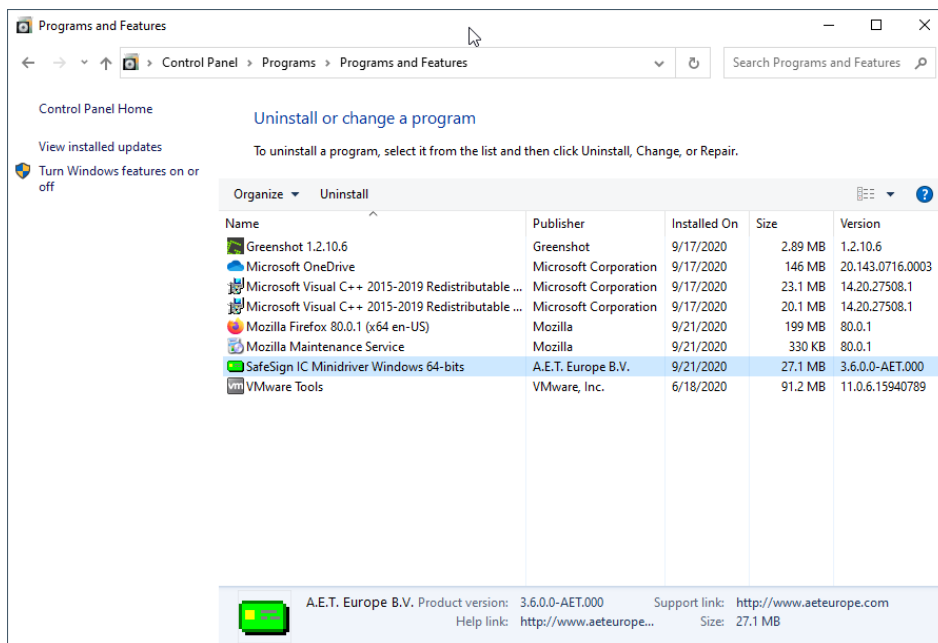


Figure 35: Programs and Features: Uninstall or change a program

- ➔ Select 'SafeSign IC Minidriver Windows 64-bit' (as above) and click **Uninstall**



4

Upon clicking **Uninstall**, you will be asked to confirm that you wish to uninstall SafeSign IC Minidriver software:

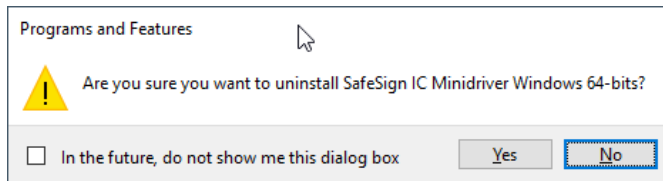


Figure 36: Programs and Features: Are you sure you want to uninstall SafeSign IC Minidriver?

➔ Click **Yes** to uninstall SafeSign IC Minidriver

Wait until SafeSign IC Minidriver is properly uninstalled, then restart the computer.

🔗 During uninstallation, Windows may warn you that you should close some applications before continuing:

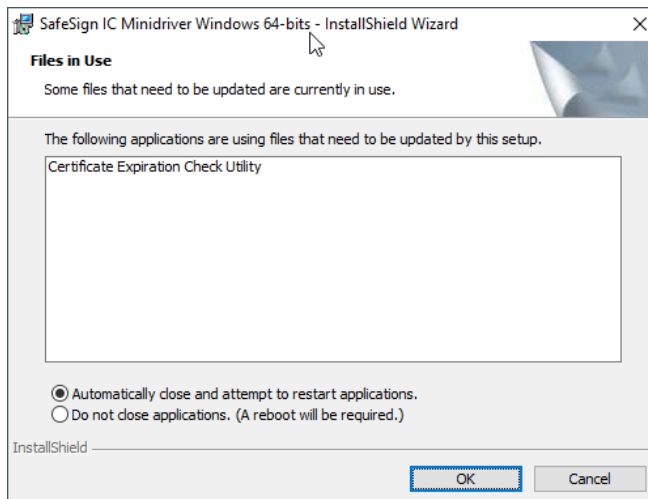


Figure 37: A reboot will be required

➔ Close the applications in the list and click **OK** to continue the de-installation.

Upon clicking **OK**, the setup will try to automatically close the applications. If this is not possible, you will be informed:

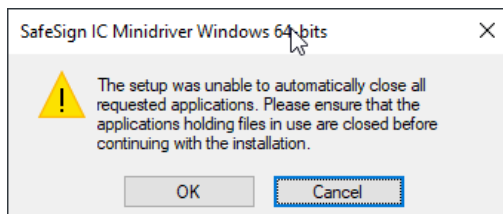


Figure 38: Setup was unable to automatically close all requested applications

➔ Click **OK** to continue the de-installation and reboot when finished.