



## SafeSign Identity Client Minidriver

Installation Guide



## Table of Contents

<b>1</b>	<b>Installation .....</b>	<b>1</b>
<b>1.1</b>	<b>Prerequisites.....</b>	<b>1</b>
1.1.1	Previous version .....	1
1.1.2	Silent installation.....	1
1.1.3	Administrator rights .....	1
1.1.4	Operating System.....	1
<b>1.2</b>	<b>Installation Procedure.....</b>	<b>2</b>
1.2.1	Custom Setup .....	7
<b>2</b>	<b>Uninstallation .....</b>	<b>8</b>
<b>2.1</b>	<b>Uninstall Card Minidriver .....</b>	<b>8</b>
<b>2.2</b>	<b>Uninstall SafeSign.....</b>	<b>9</b>
<b>Appendix A</b>	<b>Install SafeSign in Firefox and Thunderbird.....</b>	<b>11</b>



## Table of Figures

Figure 1: SafeSign IC MiniDriver Setup: Welcome .....	2
Figure 2: SafeSign IC MiniDriver Setup: Cancel installation .....	3
Figure 3 : SafeSign IC MiniDriver Setup: Setup interrupted .....	3
Figure 4: SafeSign IC MiniDriver Setup: End-User License Agreement .....	4
Figure 5: End-User License Agreement: I accept the terms in the License Agreement .....	4
Figure 6: SafeSign IC MiniDriver Setup: Custom Setup .....	5
Figure 7: SafeSign IC MiniDriver Setup: Ready to Install .....	5
Figure 8: SafeSign IC MiniDriver Setup: Installing.....	6
Figure 9: Windows Security: Would you like to install this device software?.....	6
Figure 10: SafeSign IC MiniDriver Setup: Completed .....	7
Figure 11: Programs and Features: Uninstall or change a program .....	8
Figure 12: Microsoft Windows: Restart your computer .....	9
Figure 13: Programs and Features: Uninstall or change a program .....	9
Figure 14: Programs and Features: Are you sure you want to uninstall? .....	10
Figure 15: SafeSign IC MiniDriver: Unable to automatically close applications.....	10



## Warning Notice

All information herein is either public information or is the property of and owned solely by A.E.T. Europe B.V. who shall have and keep the sole right to file patent applications or any other kind of intellectual property protection in connection with such information.

This information is subject to change as A.E.T. Europe B.V. reserves the right, without notice, to make changes to its products, as progress in engineering or manufacturing methods or circumstances warrant.

Installation and use of A.E.T. Europe B.V. products are subject to your acceptance of the terms and conditions set out in the license Agreement that accompanies each product. Nothing herein shall be construed as implying or granting to you any rights, by license, grant or otherwise, under any intellectual and/ or industrial property rights of or concerning any of A.E.T. Europe B.V. information.

Cryptographic products are subject to export and import restrictions. You are required to obtain the appropriate government licenses prior to shipping this Product.

The information contained in this document is provided "AS IS" without any warranty of any kind. Unless otherwise expressly agreed in writing, A.E.T. Europe B.V. makes no warranty as to the value or accuracy of information contained herein. The document could include technical inaccuracies or typographical errors. Changes are periodically added to the information herein. Furthermore, A.E.T. Europe B.V. reserves the right to make any change or improvement in the specifications data, information, and the like described herein, at any time.

A.E.T. EUROPE B.V. HEREBY DISCLAIMS ALL WARRANTIES AND CONDITIONS WITH REGARD TO THE INFORMATION CONTAINED HEREIN, INCLUDING ALL IMPLIED WARRANTIES OF MERCHANTABILITY, FITNESS FOR A PARTICULAR PURPOSE, TITLE AND NON-INFRINGEMENT. IN NO EVENT SHALL A.E.T. EUROPE B.V. BE LIABLE, WHETHER IN CONTRACT, TORT OR OTHERWISE, FOR ANY INDIRECT, SPECIAL OR CONSEQUENTIAL DAMAGES OR ANY DAMAGES WHATSOEVER INCLUDING BUT NOT LIMITED TO DAMAGES RESULTING FROM LOSS OF USE, DATA, PROFITS, REVENUES, OR CUSTOMERS, ARISING OUT OF OR IN CONNECTION WITH THE USE OR PERFORMANCE OF INFORMATION CONTAINED IN THIS DOCUMENT.

© Copyright A.E.T. Europe B.V., 2000-2021. All rights reserved.

SafeSign Identity Client (IC) is a trademark of A.E.T. Europe B.V. All A.E.T. Europe B.V. product names are trademarks of A.E.T. Europe B.V. All other product and company names are trademarks or registered trademarks of their respective owners.

### Credit Information:

"This product includes cryptographic software written by Eric A. Young (eay@cryptsoft.com)."

"This product includes software written by Tim J. Hudson (tjh@cryptsoft.com)."



## Document Information

Document ID: SafeSign Identity Client Minidriver Installation Guide

Project Information: SafeSign IC Release Documentation

Document revision history:

Version	Date	Author	Changes
2.0	05 October 2021	Drs C.M. van Houten	First edition for SafeSign IC Minidriver Version 3.7, release 3.7.0.0-AET.000

Document Approval

Version	Date	Name	Function
1.0	05 October 2021	B. Smid MBT	Chief Development Officer

**WE RESERVE THE RIGHT TO CHANGE SPECIFICATIONS WITHOUT NOTICE**



## About the Product

This competent all-rounder in terms of strong authentication, integration and compatibility gives you complete freedom and flexibility. Once rolled out, SafeSign Identity Client (IC) serves as the perfect guard for IT security and enables unlimited possibilities for securing your IT infrastructure.

SafeSign IC offers the most comprehensive support available on the market for (card) operating systems, smart cards, USB tokens, languages and functions. This means you have sustainable and permanent freedom of choice when it comes to manufacturer independence.

SafeSign IC enforces two- or multi factor authentication/logon to the network, client PC or application, requiring the end user to have both the USB token or smart card (something you have) and a Personal Identity Number (something you know). USB tokens and smart cards are physically and logically tamper-resistant, ensuring that the end user's digital credentials cannot be copied, modified or shared. Authentication based on smart cards or USB tokens provides the highest degree of security.

SafeSign IC is available for both fixed and mobile devices like desktops, servers, laptops, tablets and smart phones. SafeSign IC is also found in Thin Clients, printers or any other devices requiring authentication.



## About the Manual

The aim of this document is to describe how to install the SafeSign Identity Client Minidriver (henceforth referred to a SafeSign IC Minidriver) software for Windows on your computer, i.e. the different steps needed by the setup program to install SafeSign IC Minidriver.

In order to install SafeSign IC Minidriver, follow the instructions in the manual.

Every activity has a number of steps, indicated by a number: **1**

Each step will require you to take a certain action, indicated by an arrow: **➔**

Go through these steps and the actions you are required to take, in order to perform the desired activity.

While reading this document, take the notes into account.



## 1 Installation

This document describes the installation procedure of SafeSign IC Minidriver on Windows 64-bit Operating Systems.

### 1.1 Prerequisites

In order to install SafeSign IC Minidriver, consider the following prerequisites.

#### 1.1.1 Previous version

It is possible to upgrade an existing installation of SafeSign IC Minidriver version 3.5 ( $\geq 3.5.3.0$ ) to SafeSign IC Minidriver version 3.7.

The upgrade procedure is identical to the installation procedure described in section 1.2.

#### 1.1.2 Silent installation

It is possible to perform a silent (unattended) installation of SafeSign IC Minidriver.

Please refer to the SafeSign IC Minidriver Silent Installation Guide, available on request.

#### 1.1.3 Administrator rights

In order to install SafeSign IC Minidriver you will need to have local administrator rights on the (local) computer itself. This is because upon installing SafeSign IC Minidriver, access to the registry is required, which a user without local administrator rights is not granted access to. When SafeSign IC Minidriver is installed, any user can use it.

#### 1.1.4 Operating System

SafeSign IC Minidriver works with a number of Windows Operating Systems, starting from Windows 8.1 and higher, as defined in the latest Release Document.





## 1.2 Installation Procedure

This section describes the installation procedure of SafeSign IC Minidriver.

SafeSign IC Minidriver installation is quick and straightforward. The installation program will lead you through all steps necessary to install SafeSign IC Minidriver.

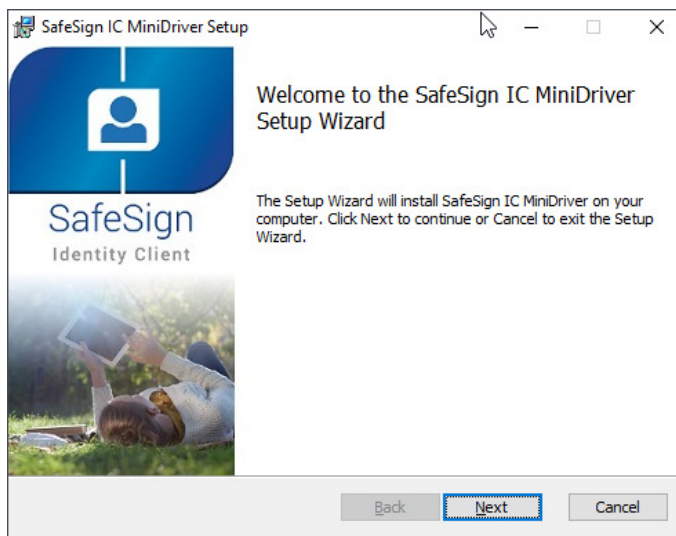
Screenshots were taken from the installation of SafeSign IC Minidriver 64-bit version on a 64-bit Windows 10 21H1 Enterprise Operating System.

It is strongly recommended that you exit all Windows programs before running the Setup program.

To install SafeSign IC Minidriver, locate the SafeSign IC Minidriver setup file (.msi) and double-click it to prepare and start the SafeSign IC MiniDriver Setup Wizard.

- Note that the default language of the Installation program is English. In order to install the .msi in a particular language (other than English), you will need to install the .msi with specific parameters, to apply a transform. Refer to section 10.1 of the SafeSign IC Minidriver version 3.7 Release Document for Windows.

- 1 When the SafeSign IC MiniDriver Setup Wizard is started, the *Welcome to the SafeSign IC MiniDriver Setup Wizard* window is displayed, welcoming you to the Setup Wizard for SafeSign IC Minidriver:



**Figure 1: SafeSign IC MiniDriver Setup: Welcome**

- ➔ Click **Next** to continue



- Please note that at every stage of the installation process, you can halt / stop the installation. In order to do so, click **Cancel**. A dialog box will be displayed, asking confirmation to cancel the installation. This dialog box also enables you to resume Setup or to exit definitively:

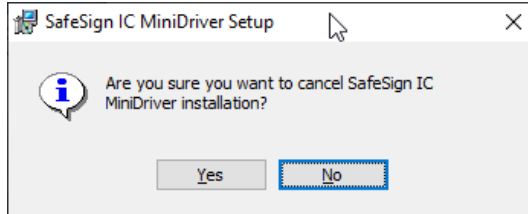


Figure 2: SafeSign IC MiniDriver Setup: Cancel installation

- Click **Yes** to cancel the installation
- Click **No** to continue the installation

Upon clicking **Yes**, the Setup Wizard will finish, without installing SafeSign IC Minidriver and modifying your system:

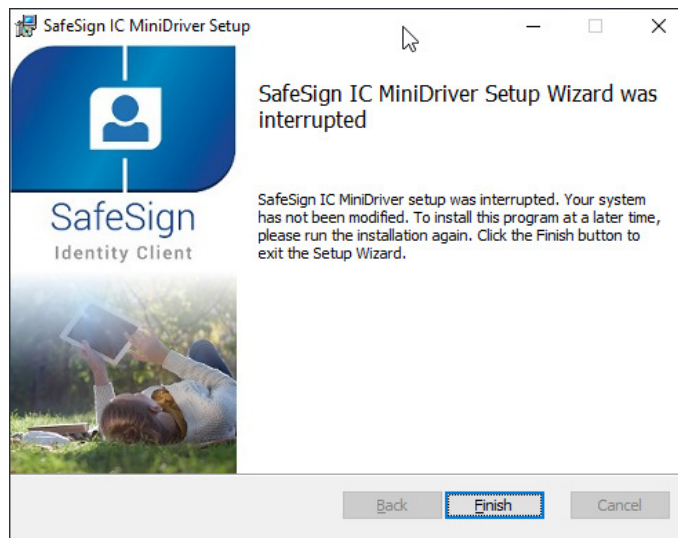


Figure 3 : SafeSign IC MiniDriver Setup: Setup interrupted



- 2 Upon clicking **Next** in the *Welcome to the SafeSign IC MiniDriver Setup Wizard* window (Figure 1), the *End-User License Agreement* window is displayed, allowing you to read the SafeSign Identity Client License Terms and Conditions before accepting it:

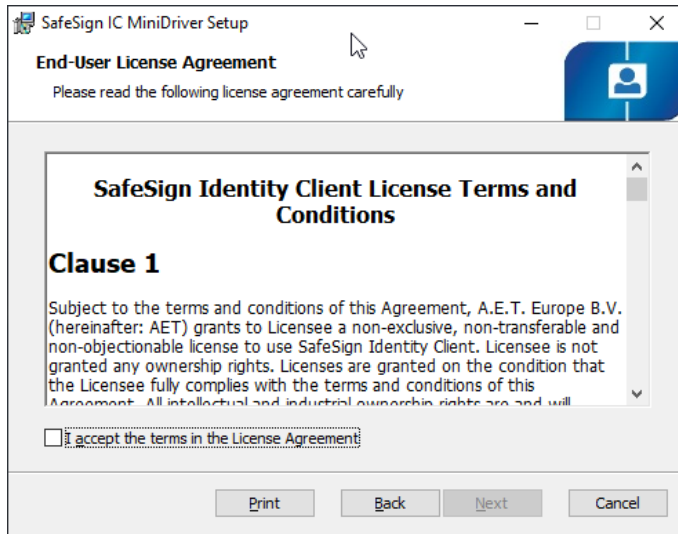


Figure 4: *SafeSign IC MiniDriver Setup: End-User License Agreement*

Read the SafeSign Identity Client License Terms and Conditions carefully. Note that in order to install SafeSign IC Minidriver, you will need to accept the terms of this agreement.

Therefore, only upon selecting “I accept the terms in the License Agreement”, the button **Next** will become available:

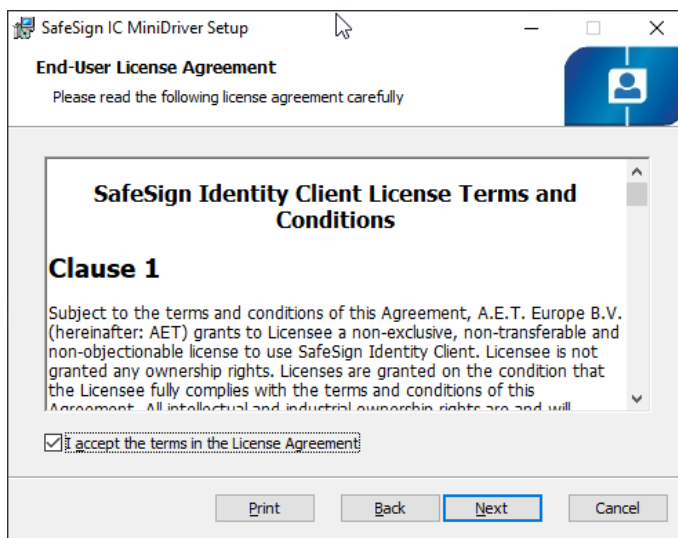


Figure 5: *End-User License Agreement: I accept the terms in the License Agreement*

➡ After accepting the terms of the License Agreement, click **Next** to continue Setup

🔗 You may return to the previous window by clicking **Back** at every step of the installation.



3

When you have accepted the SafeSign IC License Agreement and clicked **Next**, the *Custom Setup* window is displayed. This will enable you to select the features you wish to install:

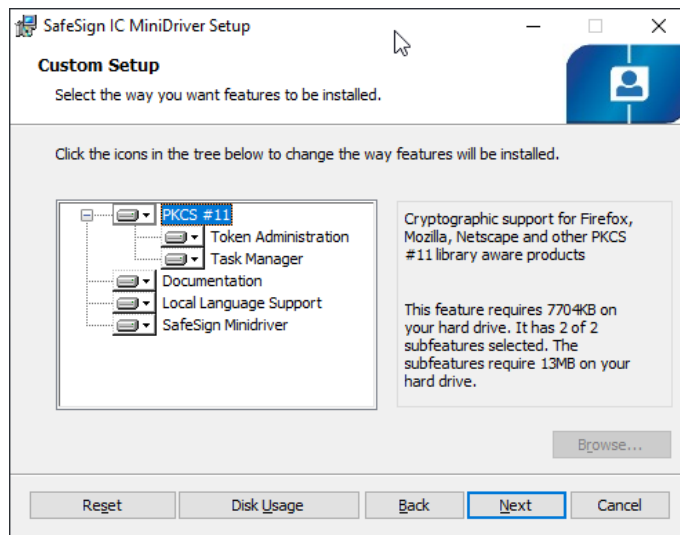


Figure 6: SafeSign IC MiniDriver Setup: Custom Setup

➔ Click **Next** to install SafeSign IC Minidriver

🔗 For non-required features, you can select if and where they are installed. You can choose not to install a feature by selecting the option “This feature will not be available”.

4

When you have selected the features you wish to install, the *Ready to Install SafeSign IC MiniDriver* window is displayed. The wizard is ready to begin installation:

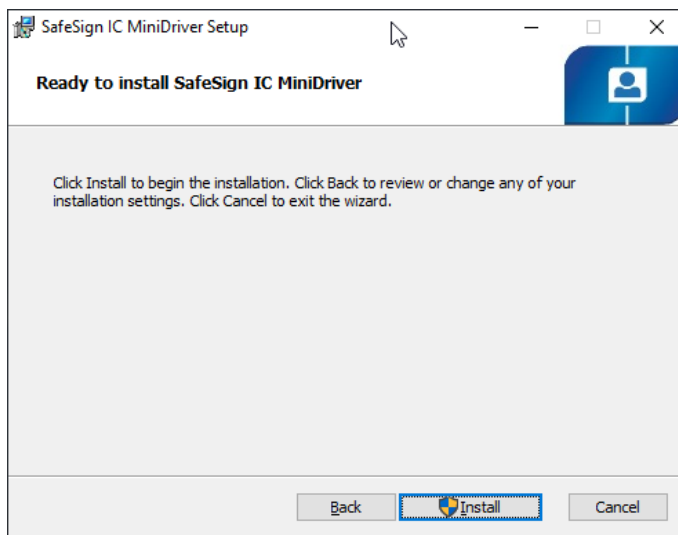


Figure 7: SafeSign IC MiniDriver Setup: Ready to Install

➔ Click **Install** to install SafeSign IC Minidriver



5

Upon clicking **Install** in the *Ready to Install SafeSign IC MiniDriver* window, the SafeSign IC MiniDriver Setup installs SafeSign IC Minidriver, with the program features you selected:

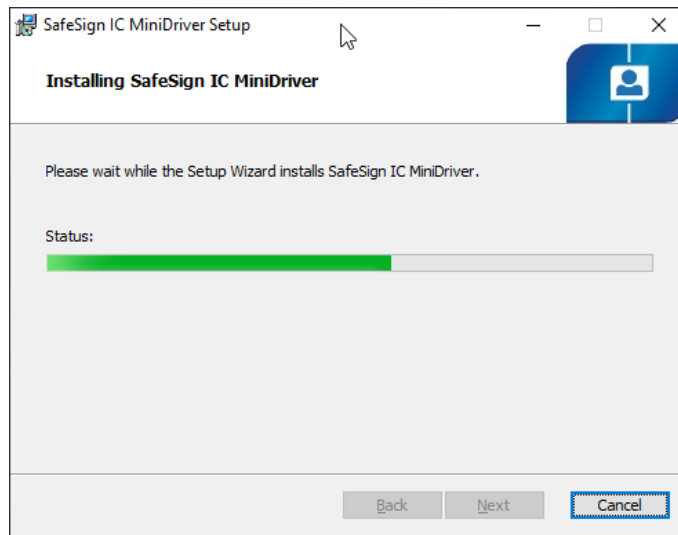


Figure 8: SafeSign IC MiniDriver Setup: Installing

➔ Wait until the program is installed

- If you wish to cancel the installation at this stage, click **Cancel**. Please note that when interrupting or cancelling the installation at this point, SafeSign IC Minidriver will not be installed and your system will not be modified.

6

During the installation of SafeSign IC Minidriver, Windows Security will ask for permission to install the SafeSign IC Minidriver software:

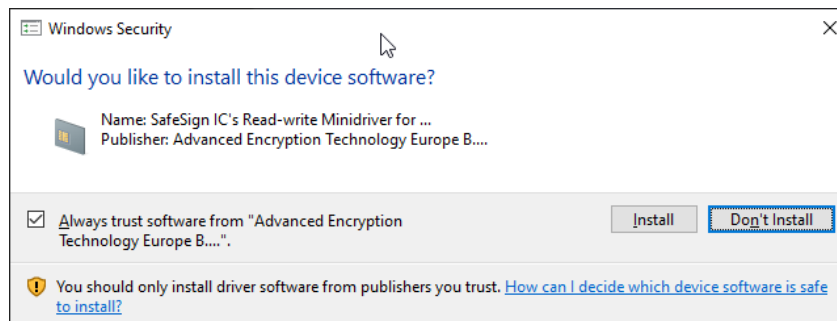


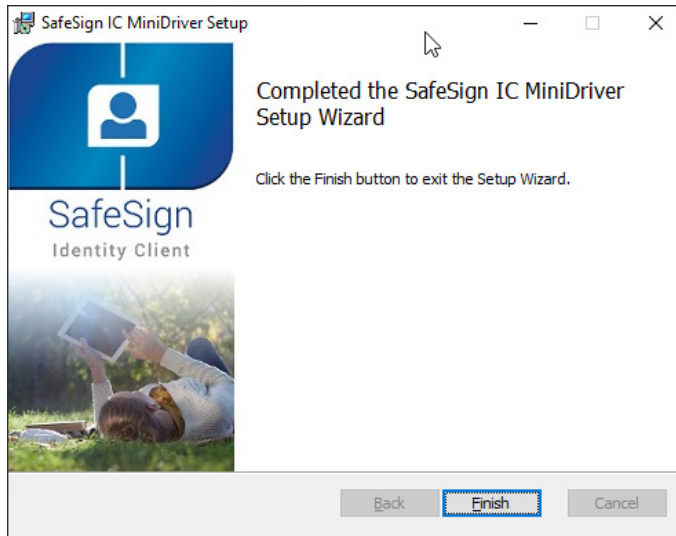
Figure 9: Windows Security: Would you like to install this device software?

In order to complete the installation of the SafeSign IC Minidriver, you need to click **Install**.

- Checking "Always trust software from "Advanced Encryption Technology Europe B..." (as in the dialog above), will import the certificate in the Trusted Publisher Store. Doing so will ensure that this security window will not appear (anymore) when installing a new version of the SafeSign IC Card Minidriver.



- 7 When SafeSign IC Minidriver is successfully installed, the *Completed the SafeSign IC MiniDriver Setup Wizard* window is displayed, informing you that SafeSign IC Minidriver was successfully installed:



**Figure 10: SafeSign IC MiniDriver Setup: Completed**

- ➔ Click **Finish** to complete setup and exit the Setup Wizard

- 🔗 Note that you will not be required to restart your computer, but it is recommended that you do so.

### 1.2.1 Custom Setup

In the *Custom Setup* window (Figure 6), the following components may be selected for installation of SafeSign IC Minidriver Windows 64-bits:

Component name	Description
PKCS #11	<i>Cryptographic support for Firefox, Mozilla, Netscape and other PKCS #11 library aware products</i> Installs the SafeSign IC PKCS #11 Library
	Token Administration   <i>Manages SafeSign cryptographic tokens and middleware</i> Installs the Token Administration Utility
	Task Manager   <i>Manage tasks that are performed upon token insertion or removal</i> Installs the ability (available from the Token Utility) to perform certain tasks when inserting or removing a token.
Documentation	<i>This will install the SafeSign documentation</i> Installs the SafeSign IC License Agreement and other documentation files.
Local Language Support	<i>Support user interface localization of the utility programs</i> Installs multi-language support for SafeSign IC utilities
SafeSign Minidriver	<i>This will install the SafeSign Minidriver</i> Installs the SafeSign card Minidriver

**Table 1: Components for Custom installation**



## 2 Uninstallation

De-installation of SafeSign IC Minidriver consists of two parts: uninstalling the SafeSign IC Card Minidriver (aetrwcm1.dll / aetrwcm1x.dll) and uninstalling SafeSign IC software (Token Utility, PKCS #11, etc.).

- Note that as of SafeSign IC Minidriver version 3.7.0.0, it is not possible to modify, repair or remove an existing installation using the original installation file.

Use the procedure described below to remove both the SafeSign IC Card Minidriver and the SafeSign IC Minidriver software.

- Note that you must reboot the computer after uninstalling.

### 2.1 Uninstall Card Minidriver

1

Go to Control Panel > Programs and Features > Uninstall or change a program and locate the SafeSign IC Card Minidriver:

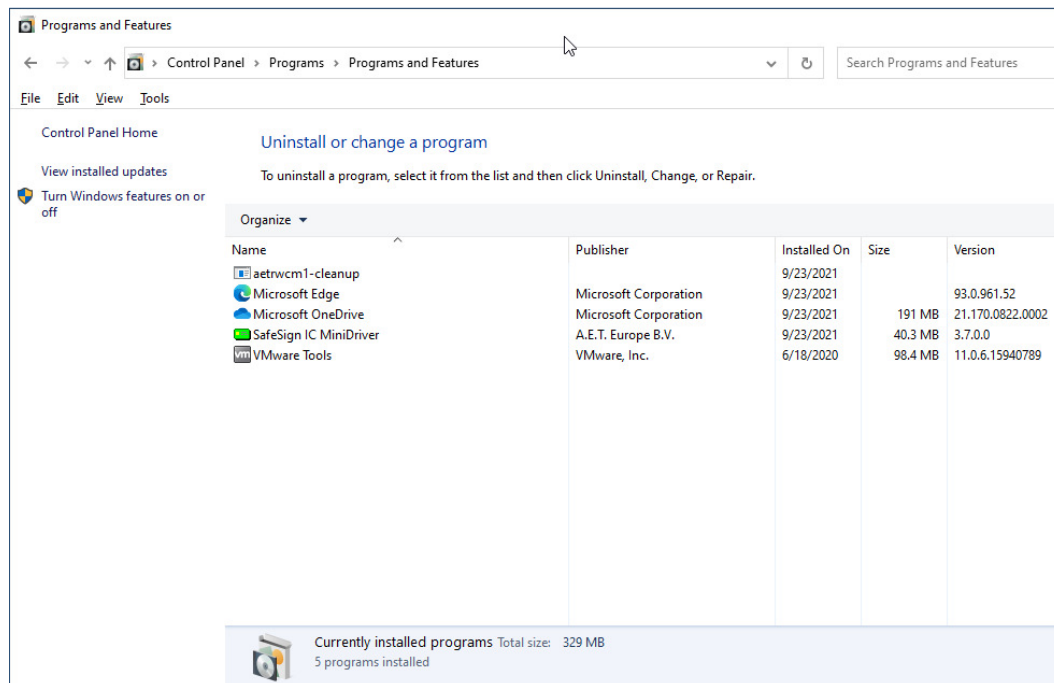


Figure 11: Programs and Features: Uninstall or change a program

- Select 'aetrwcm1-cleanup' and click **Uninstall/Change**



2 You will be asked to restart your computer:

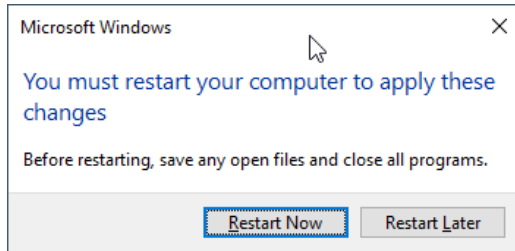


Figure 12: Microsoft Windows: Restart your computer

- ➔ Click **Restart Now** if you want to restart before removing SafeSign IC Card Minidriver
- Click **Restart Later** if you want to uninstall SafeSign IC Minidriver software first.

🔗 Note that in this document, we will continue uninstalling SafeSign IC before restarting. If you choose to restart first, continue with step 3 below after the restart.

## 2.2 Uninstall SafeSign

3 Now locate SafeSign IC Minidriver software in Control Panel > Programs and Features > Uninstall or change a program:

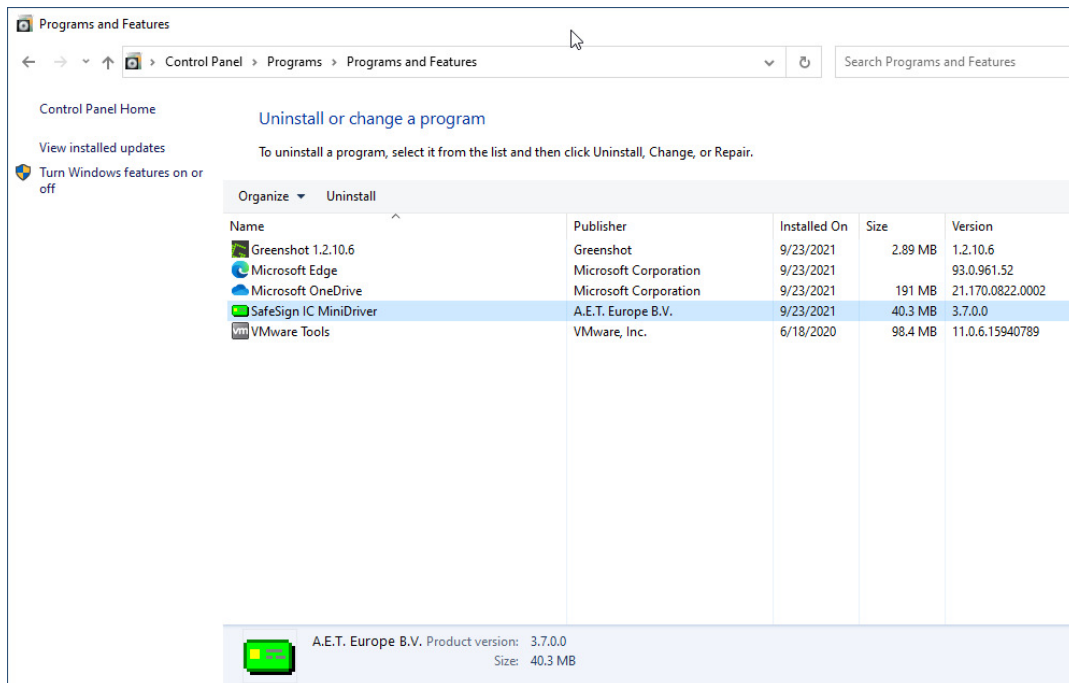


Figure 13: Programs and Features: Uninstall or change a program

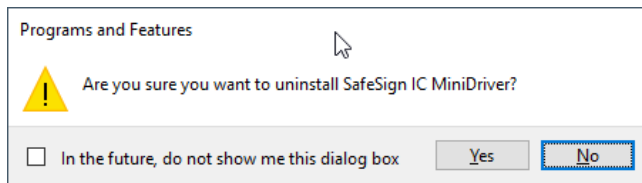
- ➔ Select 'SafeSign IC MiniDriver' (as above) and click **Uninstall**





4

Upon clicking **Uninstall**, you will be asked to confirm that you wish to uninstall SafeSign IC Minidriver software:

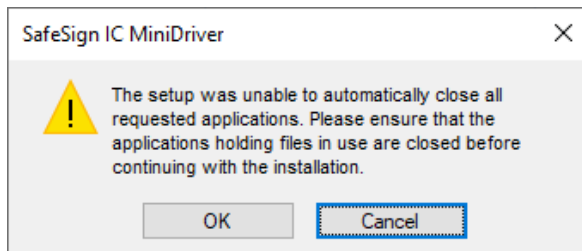


**Figure 14: Programs and Features: Are you sure you want to uninstall?**

➔ Click **Yes** to uninstall SafeSign IC Minidriver

Wait until SafeSign IC Minidriver is properly uninstalled, then restart the computer.

- During uninstallation, the Setup Wizard may warn you that you should close some applications before continuing (such as the Certificate Expiration Check Utility). Close the applications in the list and click **OK** to continue the de-installation. If the setup was unable to automatically close all requested applications, you will be informed:



**Figure 15: SafeSign IC MiniDriver: Unable to automatically close applications**

➔ Click **OK** to continue the de-installation and reboot when finished.




---

## Appendix A      Install SafeSign in Firefox and Thunderbird

---

As of Mozilla Firefox version 90, Firefox will automatically find and offer to use client authentication certificates provided by the operating system on Windows, though a library / module called 'OS Client Cert Module'.

This means that Firefox now works with the SafeSign IC Card Minidriver and that it is no longer necessary to install the SafeSign IC PKCS #11 Library as a security module in Firefox. Therefore, the Firefox Installer has been removed from the installation process of SafeSign IC Minidriver version 3.7.

-  Note that even though the Firefox Installer is still available in the Token Administration Utility's Integration menu, installing the SafeSign IC PKCS #11 Library as a security module in Firefox is not recommended and may result in you having to enter the PIN for your token twice, once for the PKCS#11 Library, once for the Minidriver.

Though the same applies to Thunderbird, decrypting encrypted messages fails in Thunderbird 91, when using the 'OS Client Cert Module' library. The decrypt functions all return `CKR_FUNCTION_NOT_SUPPORTED`. Until Thunderbird fixes the issue, the workarounds are 1) to disable `security.osclientcerts.autoload` in the registry `[HKEY_LOCAL_MACHINE\SOFTWARE\WOW6432Node\Policies\Mozilla\Thunderbird\Preferences]`, so the S/MIME module is not loaded and used upon start of Thunderbird and 2) to install the SafeSign PKCS#11 library as S/MIME security.