

SafeSign IC Minidriver Installation Guide

A.E.T. Europe B.V.

- ◆ +31 26 365 33 50
- ◆ info@aeteurope.com
- ◆ aeteurope.com

◆ trust
accelerates
growth ◆

Warning Notice

All information herein is either public information or is the property of and owned solely by A.E.T. Europe B.V. who shall have and keep the sole right to file patent applications or any other kind of intellectual property protection in connection with such information.

This information is subject to change as A.E.T. Europe B.V. reserves the right, without notice, to make changes to its products, as progress in engineering or manufacturing methods or circumstances warrant.

Installation and use of A.E.T. Europe B.V. products are subject to your acceptance of the terms and conditions set out in the license Agreement that accompanies each product. Nothing herein shall be construed as implying or granting to you any rights, by license, grant or otherwise, under any intellectual and/ or industrial property rights of or concerning any of A.E.T. Europe B.V. information.

Cryptographic products are subject to export and import restrictions. You are required to obtain the appropriate government licenses prior to shipping this Product.

The information contained in this document is provided "AS IS" without any warranty of any kind. Unless otherwise expressly agreed in writing, A.E.T. Europe B.V. makes no warranty as to the value or accuracy of information contained herein. The document could include technical inaccuracies or typographical errors. Changes are periodically added to the information herein. Furthermore, A.E.T. Europe B.V. reserves the right to make any change or improvement in the specifications data, information, and the like described herein, at any time.

A.E.T. EUROPE B.V. HEREBY DISCLAIMS ALL WARRANTIES AND CONDITIONS WITH REGARD TO THE INFORMATION CONTAINED HEREIN, INCLUDING ALL IMPLIED WARRANTIES OF MERCHANTABILITY, FITNESS FOR A PARTICULAR PURPOSE, TITLE AND NON-INFRINGEMENT. IN NO EVENT SHALL A.E.T. EUROPE B.V. BE LIABLE, WHETHER IN CONTRACT, TORT OR OTHERWISE, FOR ANY INDIRECT, SPECIAL OR CONSEQUENTIAL DAMAGES OR ANY DAMAGES WHATSOEVER INCLUDING BUT NOT LIMITED TO DAMAGES RESULTING FROM LOSS OF USE, DATA, PROFITS, REVENUES, OR CUSTOMERS, ARISING OUT OF OR IN CONNECTION WITH THE USE OR PERFORMANCE OF INFORMATION CONTAINED IN THIS DOCUMENT.

© Copyright A.E.T. Europe B.V., 2000-2026. All rights reserved.

ConsentID, BlueX and SafeSign IC are trademarks of A.E.T. Europe B.V. All A.E.T. Europe B.V. product names are trademarks of A.E.T. Europe B.V. All other product and company names are trademarks or registered trademarks of their respective owners.

Table of Contents

Warning Notice	2
Table of Contents	3
Table of Figures	4
Document Information.....	5
1 Introduction.....	6
2 Installation.....	7
2.1 Prerequisites.....	7
2.1.1 VC Runtimes.....	7
2.1.2 Previous version	7
2.1.3 Silent installation.....	8
2.1.4 Administrator rights.....	8
2.1.5 Operating System.....	8
2.2 Installation Procedure	8
2.2.1 Custom Setup.....	18
3 Uninstallation	19
3.1 Uninstallation Procedure	19

Table of Figures

Figure 1: SafeSign IC MiniDriver Setup: Runtime.....	9
Figure 2: SafeSign IC MiniDriver Setup: Setup interrupted	9
Figure 3: SafeSign IC MiniDriver Setup: Welcome	10
Figure 4: SafeSign IC MiniDriver Setup: Cancel installation.....	10
Figure 5: SafeSign IC MiniDriver Setup: Setup interrupted	11
Figure 6: SafeSign IC MiniDriver Setup: End-User License Agreement	11
Figure 7: End-User License Agreement: I accept the terms in the License Agreement.....	12
Figure 8: SafeSign IC MiniDriver Setup: Custom Setup.....	13
Figure 9: SafeSign IC MiniDriver Setup: Ready to Install	14
Figure 10: SafeSign IC MiniDriver Setup: Installing.....	15
Figure 11: SafeSign IC MiniDriver Setup: Reboot to complete the setup	16
Figure 12: Windows Security: Would you like to install this device software?.....	16
Figure 13: SafeSign IC MiniDriver Setup: Completed	17
Figure 14: SafeSign IC MiniDriver Setup: Completed.....	17
Figure 16: Programs and Features: Uninstall or change a program.....	19
Figure 17: Programs and Features: Are you sure you want to uninstall?.....	20

Document Information

Document revision history:

Version	Date	Author	Changes
1.0.0	03/04/2026	C.M. van Houten	Final version for SafeSign IC Minidriver Version 4.6 for Windows: release 4.6.0.0-AET.000

Related documents

Title	Author
SafeSign IC Minidriver Version 4.6 for Windows Release Document	C.M. van Houten

1 Introduction

By default, SafeSign IC Minidriver version 4.6 will install the read-only Minidriver.

The SafeSign IC Minidriver installation file for Windows on ARM includes the read-only Minidriver only, it does not include the SafeSign IC read/write Minidriver. Windows on ARM does not allow you to install/use non-Microsoft signed drivers. During installation, you will only be able to install the SafeSign read-only Minidriver.

The SafeSign IC Minidriver installation file for Windows 64-bit allows you to install either the read-only or read/write Minidriver or both. Which Minidriver version you need to install, depends on what purpose it needs to serve:

- ◆ The read-only Minidriver is ideal for essential tasks, such as authentication, smart card logon and secure remote access. It does not support key generation and certificate installation.
- ◆ The read/write Minidriver is best suited for comprehensive security operations such as key generation and certificate management.
- ◆ Please note that although you can select both versions to be installed on your system, we strongly recommend you not to do so. We recommend that the read/write Minidriver is installed on enrollment stations, whereas the read-only Minidriver is installed on users' workstations (as it allows for smart card logon) and on Terminal Servers (to allow for remote logon).
- ◆ When you install both the read-only and read/write Minidriver, both the read-only Minidriver and read/write Minidriver dll files will be installed in the system directories and all ATRs will by default be associated with the read-only Minidriver. If you want to use your card with the read/write Minidriver (e.g. for enrollment), you need to edit the entry for this particular card in the aforementioned registry key to contain the filename / path to the read/write Minidriver file. How to do this is described in the Administrators' Guide.

2 Installation

This document describes the installation procedure of SafeSign IC Minidriver on Windows Operating Systems, i.e. the different steps needed by the setup program to install SafeSign IC Minidriver:

- ◆ In order to install SafeSign IC Minidriver, follow the instructions in the manual.
- ◆ Every activity has a number of steps, indicated by a number.
- ◆ Each step will require you to take a certain action, indicated by an arrow. Go through these steps and the actions you are required to take, in order to perform the desired activity, taking the notes into account.

2.1 Prerequisites

In order to install SafeSign IC Minidriver, consider the following prerequisites.

2.1.1 VC Runtimes

Because Microsoft deprecated usage of merge modules in Visual Studio, SafeSign IC Minidriver for Windows now includes the VC Runtime installers in the release archive. If the runtime is not found (or out-of-date), the user will be notified during SafeSign IC Minidriver installation (which will abort), upon which he can first install the runtimes and re-run the SafeSign IC Minidriver installer.

2.1.2 Previous version

It is possible to upgrade an existing installation of SafeSign IC Minidriver version 4.5 to SafeSign IC Minidriver version 4.6.

2.1.3 Silent installation

It is possible to perform a silent (unattended) installation of SafeSign IC Minidriver.

Please refer to the SafeSign IC Minidriver Silent Installation Guide, available on request.

2.1.4 Administrator rights

In order to install SafeSign IC Minidriver you will need to have local administrator rights on the (local) computer itself. When SafeSign IC Minidriver is installed, any user can use it.

2.1.5 Operating System

SafeSign IC Minidriver works with a number of versions of Microsoft Windows, as defined in the latest Release Document.

2.2 Installation Procedure

This section describes the installation procedure of SafeSign IC Minidriver.

SafeSign IC Minidriver installation is quick and straightforward. The installation program will lead you through all steps necessary to install SafeSign IC Minidriver.

Screenshots were taken from the installation of SafeSign IC Minidriver 64-bit version on a 64-bit Windows 11 25H2 Enterprise Operating System.

It is strongly recommended that you exit all Windows programs before running the Setup program.

To install SafeSign IC Minidriver, locate the SafeSign IC Minidriver setup file (.msi) and double-click it to prepare and start the SafeSign IC MiniDriver Setup Wizard.

- ◆ Note that the default language of the Installation program is English. In order to install the .msi in a particular language (other than English), you will need to install the .msi with specific parameters, to apply a transform. Refer to section 10.1 of the SafeSign IC Minidriver version 4.6 Release Document for Windows.

Note that upon installing SafeSign IC Minidriver version 4.6 for Windows without the required Microsoft Visual C++ Runtimes (*VC_redist.x64* and *VC_redist.x86*), you will be notified that the necessary runtime(s) is missing:

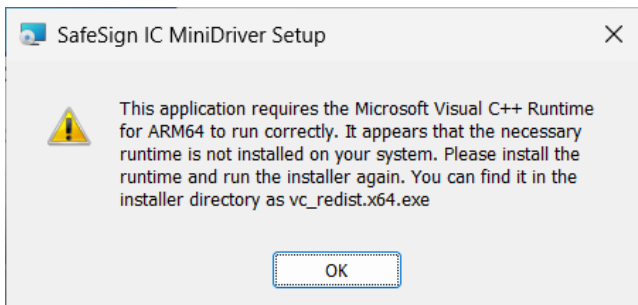


Figure 1: SafeSign IC MiniDriver Setup: Runtime

Upon clicking **OK**, the Setup Wizard will finish, without installing SafeSign IC Minidriver and modifying your system:

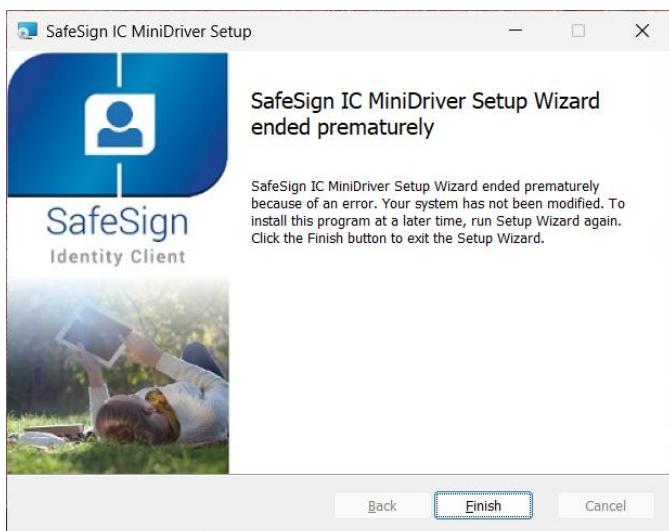


Figure 2: SafeSign IC MiniDriver Setup: Setup interrupted

- ◆ Install the runtimes and re-run the SafeSign IC Minidriver installer

- 1 When the SafeSign IC MiniDriver Setup Wizard is started, the *Welcome to the SafeSign IC MiniDriver Setup* window is displayed, welcoming you to the SafeSign IC Minidriver Setup Wizard:



Figure 3: SafeSign IC MiniDriver Setup: Welcome

- Click **Next** to continue
- Please note that at every stage of the installation process, you can halt / stop the installation. In order to do so, click **Cancel**. A dialog box will be displayed, asking confirmation to cancel the installation. This dialog box also enables you to resume Setup or to exit definitely:

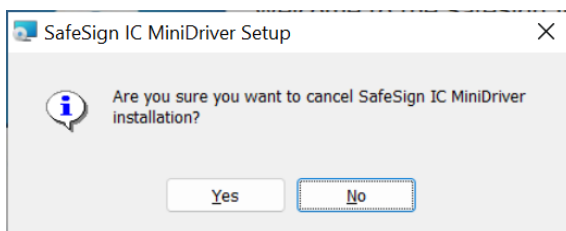


Figure 4: SafeSign IC MiniDriver Setup: Cancel installation

- Click **Yes** to cancel the installation / Click **No** to continue the installation

Upon clicking **Yes**, the Setup Wizard will finish, without installing SafeSign IC Minidriver and modifying your system:

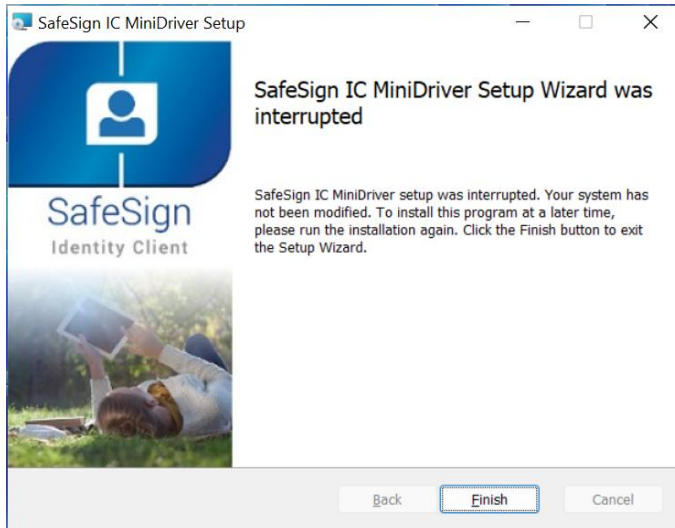


Figure 5: SafeSign IC MiniDriver Setup: Setup interrupted

- 2 Upon clicking **Next** in the *Welcome to the SafeSign IC MiniDriver Setup Wizard* window (Figure 3), the *End-User License Agreement* window is displayed, allowing you to read the SafeSign Identity Client License Terms and Conditions before accepting it:

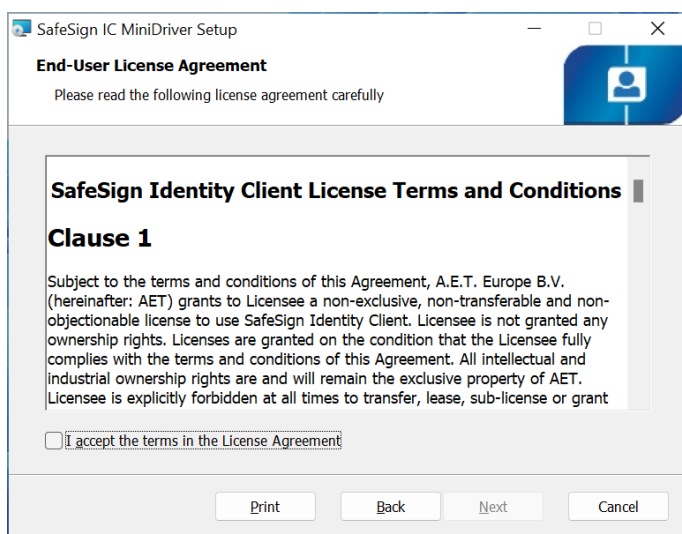


Figure 6: SafeSign IC MiniDriver Setup: End-User License Agreement

Read the SafeSign Identity Client License Terms and Conditions carefully. Note that in order to install SafeSign IC Minidriver, you will need to accept the terms of this agreement.

Therefore, only upon selecting “I accept the terms in the License Agreement”, the button **Next** will become available:

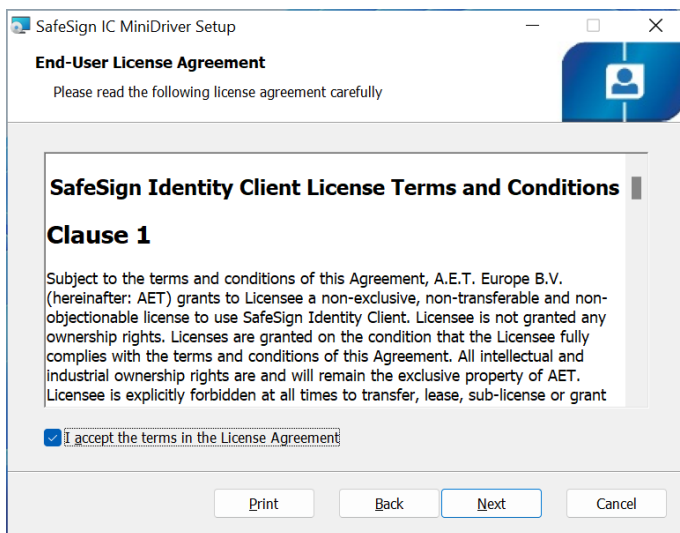


Figure 7: End-User License Agreement: I accept the terms in the License Agreement

- After accepting the terms of the License Agreement, click **Next** to continue Setup
- You may return to the previous window by clicking **Back** at every step of the installation.

- 3 When you have accepted the SafeSign IC License Agreement and clicked **Next**, the *Custom Setup* window is displayed. This will enable you to select the features you wish to install:

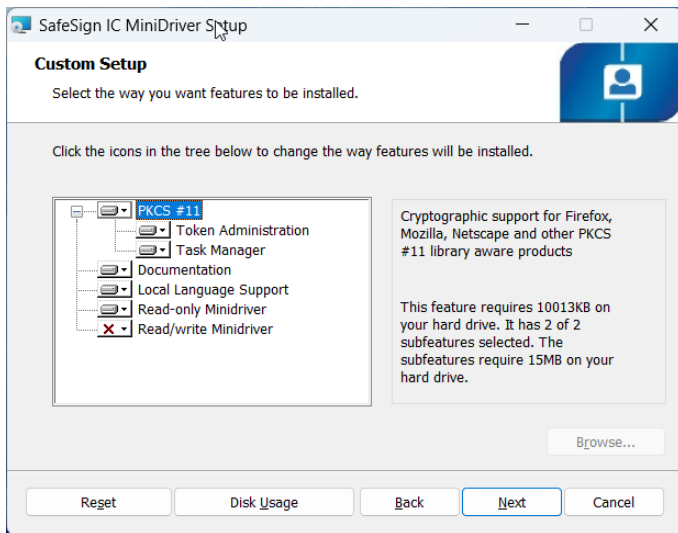


Figure 8: SafeSign IC MiniDriver Setup: Custom Setup

By default, only the read-only Minidriver will be installed. You can choose to install the read-only Minidriver and/or the read/write Minidriver.

- ◆ When you have selected the desired Minidriver to install, click **Next**
- ◆ For non-required features, you can select if and where they are installed. You can choose not to install a feature by selecting the option “This feature will not be available”.
- ◆ Note that when installing SafeSign IC Minidriver for Windows on ARM, the Read/Write Minidriver will not be available.

- 4 When you have selected the features you wish to install, the *Ready to Install SafeSign IC MiniDriver* window is displayed. The wizard is ready to begin installation:

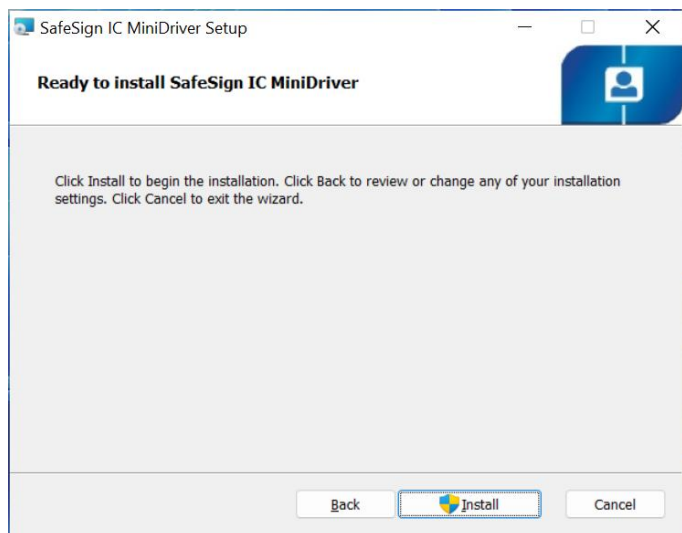


Figure 9: *SafeSign IC MiniDriver Setup: Ready to Install*

- Click **Install** to install SafeSign IC Minidriver

- 5 Upon clicking **Install** in the *Ready to Install SafeSign IC MiniDriver* window, the SafeSign IC MiniDriver Setup installs SafeSign IC Minidriver, with the program features you selected:

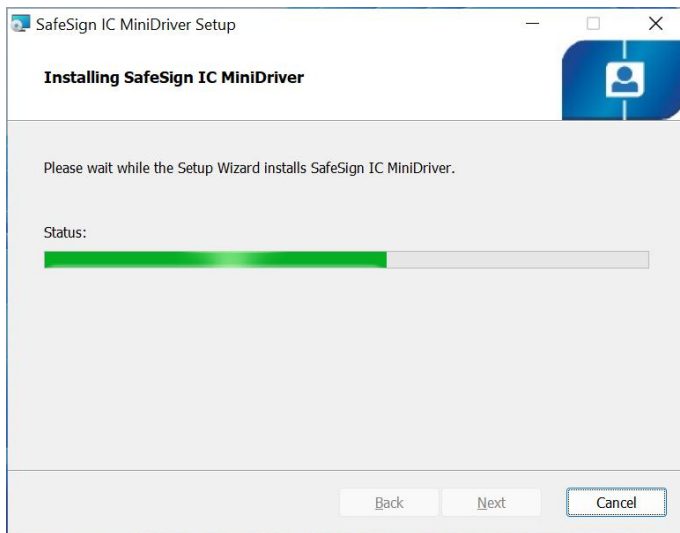


Figure 10: SafeSign IC MiniDriver Setup: Installing

- ▶ Wait until the program is installed
- ◆ If you wish to cancel the installation at this stage, click **Cancel**. Please note that when interrupting or cancelling the installation at this point, SafeSign IC Minidriver will not be installed and your system will not be modified.

- 6 During installation, you may receive the following message, informing you that you need to reboot to complete the setup:

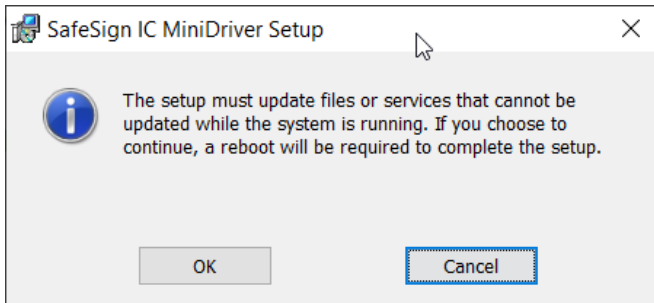


Figure 11: SafeSign IC MiniDriver Setup: Reboot to complete the setup

- ▶ Click **OK** to reboot after installation

During the installation of SafeSign IC read/write Minidriver (only), Windows Security will ask for permission to install the SafeSign IC Minidriver software:

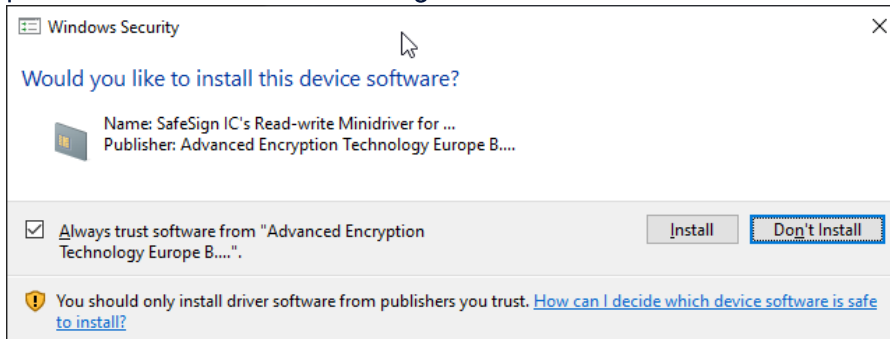


Figure 12: Windows Security: Would you like to install this device software?

In order to complete the installation of the SafeSign IC Minidriver, you need to click **Install**.

- ◆ Checking “Always trust software from”Advanced Encryption Technology Europe B...” (as in the dialog above), will import the certificate in the Trusted Publisher Store. Doing so will ensure that this security window will not appear (anymore) when installing a new version of the SafeSign IC Card Minidriver.

- 7** When SafeSign IC Minidriver is successfully installed, the *Completed the SafeSign IC MiniDriver Setup Wizard* window is displayed, informing you that SafeSign IC Minidriver was successfully installed:

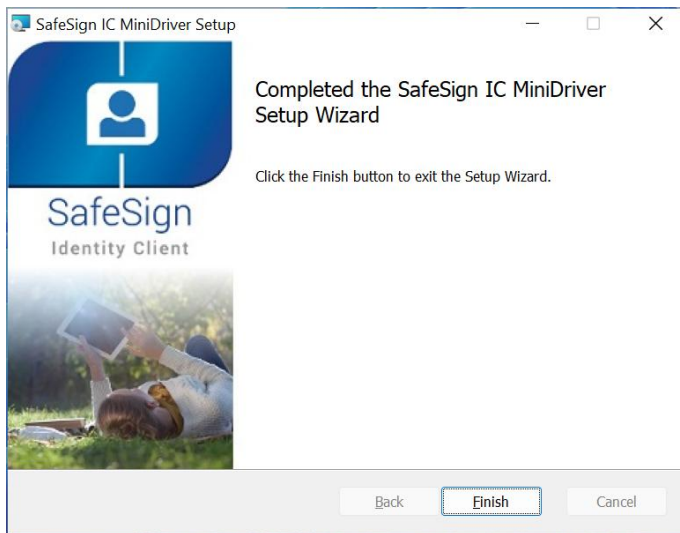


Figure 13: SafeSign IC MiniDriver Setup: Completed

- ▶ Click **Finish** to complete setup and exit the Setup Wizard

- 8** As a final step, you will be asked to restart your system (see also Figure 11):

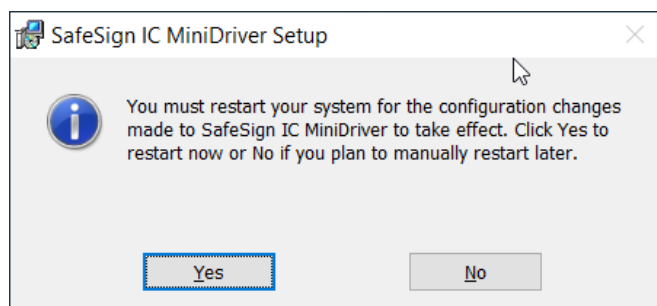


Figure 14: SafeSign IC MiniDriver Setup: Completed

- ▶ Click **Yes** to restart your computer

2.2.1 Custom Setup

In the Custom Setup window (Figure 8), the following components may be selected for installation of SafeSign IC Minidriver:

Component Name	Description
PKCS #11	Cryptographic support for Firefox, Mozilla, Netscape and other PKCS #11 library aware products Installs the SafeSign IC PKCS #11 Library
	Token Administration Manages SafeSign cryptographic tokens and middleware Installs the Token Administration Utility
	Task Manager Manage tasks that are performed upon token insertion or removal Installs the ability (available from the Token Utility) to perform certain tasks when inserting or removing a token.
Documentation	This will install the SafeSign documentation Installs the SafeSign IC License Agreement and other documentation files.
Local Language Support	Support user interface localization of the utility programs Installs multi-language support for SafeSign IC utilities
Read-only Minidriver	This will install the SafeSign read-only Minidriver: Install to perform cryptographic application tasks, such as smart card authentication and logon.
Read-Write Minidriver (Windows 64-bit only)	This will install the SafeSign read/write Minidriver: Install to perform cryptographic token tasks, such as key generation and certificate download.

Table 1: Installation Components

3 Uninstallation

SafeSign IC Minidriver software can be uninstalled from the *Control Panel > Programs and Features > Uninstall or change a program* or *Settings > Apps > Installed Apps*.

It is not possible to modify or repair an existing installation using the original installation file.

- ◆ Note that you must reboot the computer after uninstalling.

3.1 Uninstallation Procedure

- 1 Locate SafeSign IC Minidriver software in *Control Panel > Programs and Features > Uninstall or change a program*:

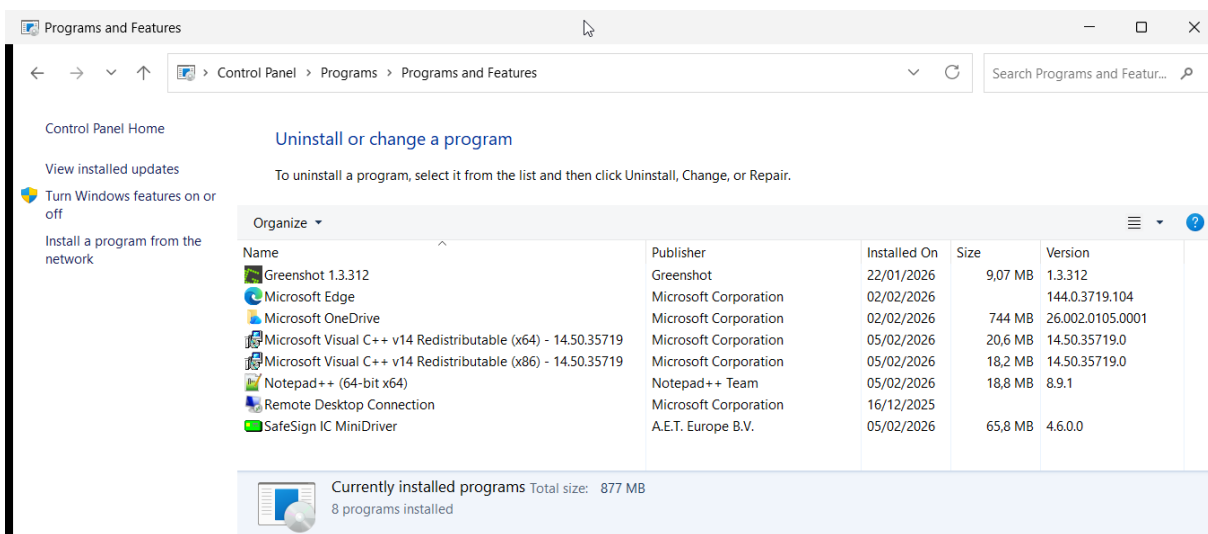


Figure 15: Programs and Features: Uninstall or change a program

- ◆ Select 'SafeSign IC MiniDriver' (as above) and click **Uninstall**

- 2** Upon clicking **Uninstall**, you will be asked to confirm that you wish to uninstall SafeSign IC Minidriver software:



Figure 16: Programs and Features: Are you sure you want to uninstall?

- Click **Yes** to uninstall SafeSign IC Minidriver

Wait until SafeSign IC Minidriver is properly uninstalled, then restart the computer.

- During uninstallation, the Setup Wizard may warn you that you should close some applications before continuing (such as the Certificate Expiration Check Utility). Close the applications in the list and click **OK** to continue the de-installation. If the setup was unable to automatically close all requested applications, you will be informed of this.